



## QUICK START GUIDE

AX1800 USB 3.0 Wireless Adapter



[www.wavlink.com/en\\_us/Vitesse-Pro-B](http://www.wavlink.com/en_us/Vitesse-Pro-B)

Scan the QR code or load the link for Quick Start Guide and Driver downloading



WAVLINK (@WavlinkOfficial)  
WAVLINK SUPPORT (@WavlinkTechSupport)

### Vitesse Pro-B

01

### Safety Instructions

Keep this quick start guide for future reference.  
Keep this equipment away from humidity.

If any of the following situation arises, get the device checked by a service technician.

- The equipment has been exposed to moisture.
- The equipment has been dropped and damaged.
- The equipment has obvious sign of breakage.
- The equipment has not been working well or you cannot get it work according to QUICK START GUIDE.

### Copyright Statement

No part of this publication may be reproduced in any form by any means without the prior written permission.  
Regardless of any direct acknowledgement elsewhere in the body of this document, WAVLINK hereby acknowledges that all trademarks, registered trademarks, service marks, and other protected names and/or symbols contained in this manual and other related documents are the property of their respective holders.

### Disclaimer

Information in this document is subject to change without notice. The manufacturer does not make any representations or warranties (implied or otherwise) regarding the accuracy and completeness of this document and shall in no event be liable for any loss of profit or any commercial damage, including but not limited to special, incidental, consequential or other damage.

### WEEE Directive & Product Disposal



At the end of its serviceable life, this product should not be treated as household or general waste. It should be handed over to the applicable collection point for the recycling of electrical and electronic equipment, or returned to the supplier for disposal.

### Basic Info

#### In the Box

- 1 × AX1800 USB 3.0 Wireless Adapter
- 1 × USB 3.0 Dock
- 1 × Quick Start Guide

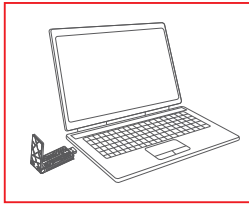
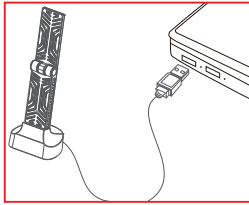
#### System Requirements

- At least one USB 3.0 port
- Windows 10/11

02

### Connection Diagram

Connect the adapter to your device via the involved USB 3.0 cable or directly insert the adapter into an open USB port, we recommend you to insert the adapter into the USB 3.0 port directly.



03

### LED Description

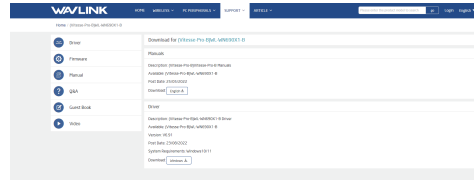
LED	Description
Blink in blue	Has connected/is connecting to the Wi-Fi
Off	Disconnected to the Wi-Fi

### Driver Installation

Before setting up your WAVLINK Vitesse Pro-B USB 3.0 Wi-Fi Adapter, please download and install the driver to make it work.

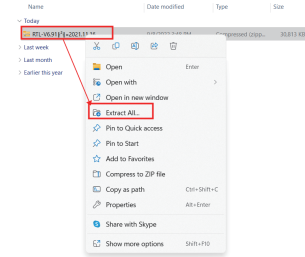
Steps 1: Download the driver for your computer from WAVLINK official website, available here:

[https://www.wavlink.com/en\\_us/Vitesse-Pro-B](https://www.wavlink.com/en_us/Vitesse-Pro-B)



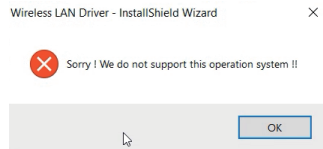
04

Steps 2: Please extract the source file to your computer desktop since the driver package you downloaded is compressed (zipped) folder.



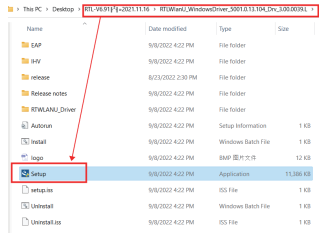
#### Note:

If the source file is not extracted when you install the driver, an error prompt message "Sorry! We do not support this operation system" may appear, and the driver cannot be installed correctly.

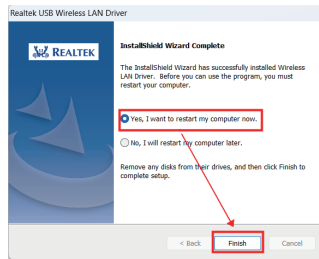


05

Steps 3: Open the driver installation package you just extracted on your desktop, navigate to the "Setup.exe" application and double-click to execute the driver installer.

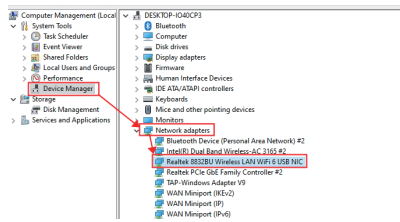


Steps 4: Complete the driver installation as prompted by the installer. Please select "Yes, I want to restart my computer now", and click "Finish".

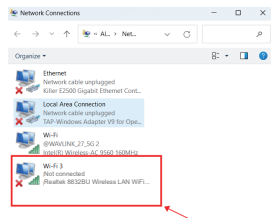


06

Steps 5 : Now open **Device Manager** and locate the network adapter to check whether the WAVLINK Vitesse Pro-B USB Wi-Fi adapter has been detected as image below shows.



Alternatively, you can open the **Network Connection Center** to view the WAVLINK Vitesse Pro-B USB Wi-Fi Adapter .

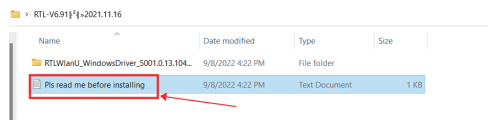


07

Steps 6: Now you can join a Wi-Fi network with your WAVLINK Wi-Fi Adapter.

#### Tips:

If you have exactly followed all the steps above to install the driver and the installation fails, here the driver installation package is accompanied by a documentation on "Pls read me before installing", which contains the article "How to manually install the driver" may help you to work around, found here:



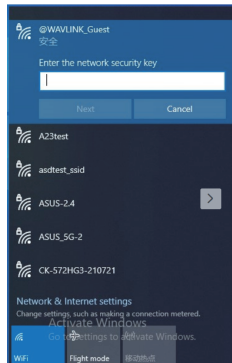
### Wi-Fi Configuration

Step 1: When the computer turned on, insert the wireless card into an open USB port

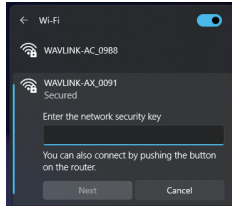
Step2: Left-click network icon in the task bar to turn on the new WiFi.

Step 3. Select the Wi-Fi SSID you want to connect to and enter the Wi-Fi password. After successful connection, the LED would be blue and blink quickly.

08



Windows 10



Windows 11

#### NOTE:

Firstly you need to find the right WLAN name of your new wireless LAN card, then you can set it up if necessary, you can change the name in "Network Connections".

09

### Verifying Installation

If your adapter is not functioning then probably the drivers are missing or the wrong drivers have been installed.

Step 1: Plug in the USB adapter.

Step 2: Right-click the computer icon>select "Manage" > double-click "Device Manager" >go to "Network adapters" to ensure if the right driver is installed.



Thanks for purchasing  
WAVLINK product!

Official website: [www.wavlink.com](http://www.wavlink.com)  
Technical support: [support@wavlink.com](mailto:support@wavlink.com)

10

名称：WN690X1-B 说明书WAVLINK-E3

成品尺寸：70x100MM

页数/展开尺寸：420x100MM

材质工艺：105克铜版纸 正反印刷 风琴折

修改时间：2023.02.04

备注：韩祎博

修改记录：