



QUICK START GUIDE

3-Port USB 3.1 Hub with 2.5 Gigabit Network



www.wavlink.com/en_us/WL-UHP3032G

Scan the QR code or load the link for Quick Start Guide and Driver downloading



WAVLINK (@WavlinkOfficial)
WAVLINK SUPPORT (@WavlinkTechSupport)

WL-UHP3413

Safety Instructions

Always read the safety instructions carefully. Keep this Quick Start Guide for future reference. Keep this equipment away from humidity. If any of the following situation arises, get the equipment checked by a service technician:

- The equipment has been exposed to moisture.
- The equipment has been dropped and damaged.
- The equipment has obvious sign of breakage.
- The equipment has not been working well or you cannot get it work according to Quick Start Guide.

Copyright Statement

No part of this publication may be reproduced in any form by any means without the prior written permission. Other trademarks or brand names mentioned herein are trademarks or registered trademarks of their respective companies.

Disclaimer

Information in this document is subject to change without notice. The manufacturer does not make any representations or warranties (implied or otherwise) regarding the accuracy and completeness of this document and shall in no event be liable for any loss of profit or any commercial damage, including but not limited to special, incidental, consequential, or other damage.

WEEE Directive & Product Disposal



At the end of its serviceable life, this product should not be treated as household or general waste. It should be handed over to the appropriate collection point for the recycling of electrical and electronic equipment, or returned to the supplier for disposal.

2

In the Box

- 1 x 3-Port USB 3.1 Hub with 2.5 Gigabit Network
- 1 x Quick Start Guide

Specification

- The USB-C upstream port provides 85W power charging and transfers speed up to 10Gbps.
- Aluminum fineness sandblasted housing & build in USB 3.1 extension cable.
- Three USB 3.1 ports transfer speeds up to 10 Gbps, and backward compatible with USB 3.0/2.0/1.1 devices.
- RJ-45 Ethernet port supports 2.5 Gigabit Ethernet networks.
- Support protection, Plug and Play to reach user-friendly.
- Over-current detection for all downstream ports.
- Support Windows 7/8/10/11, Mac OS X 10.8 and Linux.
- Driver free, no driver installation is required.

System Requirements

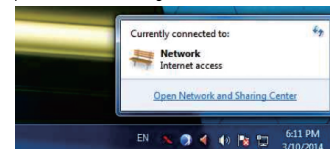
- PC/Computer at least has one USB-C port
- Microsoft Windows 7/8/10/11
- Apple Mac OS 10.8 or later
- Linux

3

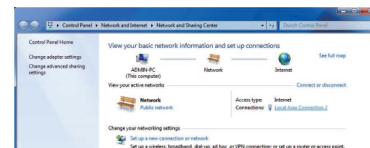
Network Connection

This Hub is driver-free, so there is no need to install external drivers. Before configuring, please connect your network device, e.g. switch, router, DSL/Cable modem to the Hub's Ethernet port via an Ethernet cable.

1. Right-click the network icon in the system tray and click **Open Network and Sharing Center**.

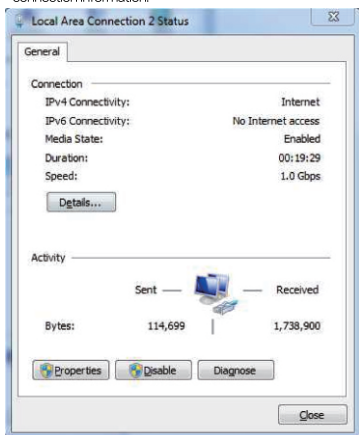


2. Click **Local Area Connection 2...**



4

3. Current connection speed will be displayed among the connection information.



5

Network Configuration

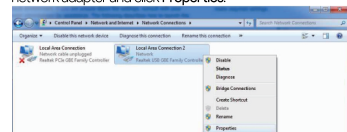
You should configure your Ethernet adapter as required according to your network environment. If you are unsure about the settings, consult with your network administrator for assistance. The following describes how to launch the network settings window for your Ethernet adapter.

1. Right-click the network icon in the system tray and click **Open Network and Sharing Center**.

2. Click **Change adapter settings**.

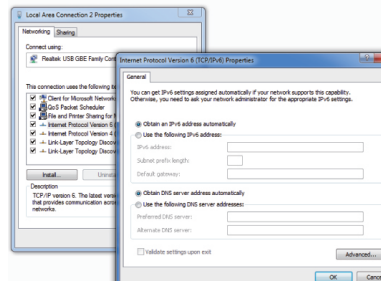


3. Right-click the **Local Area Connection 2** icon indicating your network adapter and click **Properties**.



6

4. Then the **Local Area Connection Properties** window appears for user to make required settings.



7



Thank you for purchasing
WAVLINK product!

Official website: www.wavlink.com
Technical support: support@wavlink.com

UHP3413说明书WAVLINK-E1
105G铜版纸彩色双面印刷折叠
成品尺寸: 55x70mm
展开尺寸: 220x70mm
设计: 冯景祥 2023.03.08