



QUICK START GUIDE

3-Port 10G USB 3.1 Hub
with 2.5 Gigabit Network



www.wavlink.com/en_us/WL-UHP3032G

Scan the QR code or load the link for
Quick Start Guide and Driver downloading



WAVLINK (@WavlinkOfficial)
WAVLINK SUPPORT (@WavlinkTechSupport)

WL-UHP3032G

Safety Instructions

Always read the safety instructions carefully.
Keep this Quick Start Guide for future reference.
Keep this equipment away from humidity.
If any of the following situation arises, get the equipment checked by a service technician:

- The equipment has been exposed to moisture.
- The equipment has been dropped and damaged.
- The equipment has obvious sign of breakage.
- The equipment has not been working well or you cannot get it work according to Quick Start Guide.

Copyright Statement

No part of this publication may be reproduced in any form by any means without the prior written permission.
Other trademarks or brand names mentioned herein are trademarks or registered trademarks of their respective companies.

Disclaimer

Information in this document is subject to change without notice. The manufacturer does not make any representations or warranties (implied or otherwise) regarding the accuracy and completeness of this document and shall in no event be liable for any loss of profit or any commercial damage, including but not limited to special, incidental, consequential, or other damage.

WEEE Directive & Product Disposal



At the end of its serviceable life, this product should not be treated as household or general waste. It should be handed over to the applicable collection point for the recycling of electrical and electronic equipment, or returned to the supplier for disposal.

2

In the Box

- 1 x 3-Port 10G USB 3.1 Hub with 2.5 Gigabit Network
- 1 x Quick Start Guide

Features

- USB-C upstream port provides 85W power charging and transfer speed up to 10Gbps.
- Aluminum fineness sandblasted housing & built USB 3.1 extension cable.
- Three USB 3.1 ports transfer speed up to 10 Gbps, and backward compatible with USB 3.0/2.0/1.1 devices.
- RJ-45 Ethernet port supports 2.5 Gigabit Ethernet networks.
- Plug and Play for friendly.
- Support over-current protection.
- Support Windows 7/8/10/11, Mac OS X 10.8 and Linux.

System Requirements

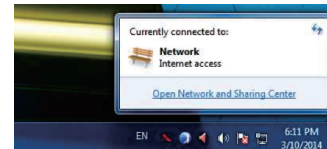
- PC at least has one USB-C port
- Microsoft Windows 7/8/10/11
- Apple Mac OS 10.8 or later
- Linux

3

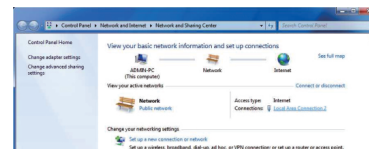
Network Connection

This Hub is driver-free, so there is no need to install external drivers. Before configuring, please connect your network device, e.g. switch, router, DSL/Cable modem to the Hub's Ethernet port via an Ethernet cable.

1. Right-click the network icon in the system tray and click Open Network and Sharing Center.

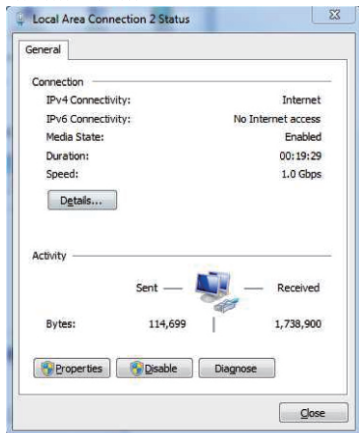


2. Click Local Area Connection 2...



4

3. Current connection speed will be displayed among the connection information.



5

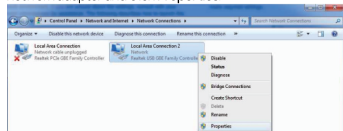
Network Configuration

You should configure your Ethernet adapter as required according to your network environment. If you are unsure about the settings, consult with your network administrator for assistance. The following describes how to launch the network settings window for your Ethernet adapter.

1. Right-click the network icon in the system tray and click Open Network and Sharing Center.
2. Click Change adapter settings.

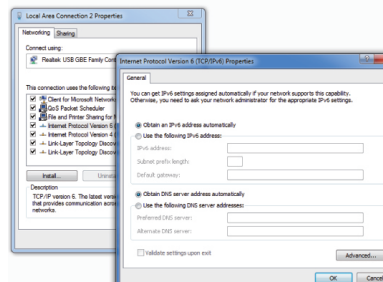


3. Right-click the Local Area Connection icon indicating your network adapter and click Properties.



6

4. Then the Local Area Connection Properties window appears for user to make required settings.



Thank you for purchasing
WAVLINK product!

Official website: www.wavlink.com
Technical support: support@wavlink.com

7