



## QUICK START GUIDE

USB-C 10G Triple 4K Display Universal Docking Station



[www.wavlink.com/en\\_us/WL-UG69PD13](http://www.wavlink.com/en_us/WL-UG69PD13)

Scan the QR code or load the link for Quick Start Guide and Driver downloading

WL-UG69PD13



WAVLINK (@WavlinkOfficial)  
WAVLINK SUPPORT (@WavlinkTechSupport)

### Safety Instructions

Keep this Quick Start Guide for future reference. Keep this equipment away from humidity. If any of the following situation arises, get the equipment checked by a service technician:

- The equipment has been exposed to moisture.
- The equipment has been dropped and damaged.
- The equipment has obvious sign of breakage.
- The equipment has not been working well or you cannot get it work according to quick start guide.

### Copyright Statement

No part of this publication may be reproduced in any form by any means without the prior written permission. Regardless of any direct acknowledgment elsewhere in the body of this document, WAVLINK hereby acknowledges that all trademarks, registered trademarks, service marks, and other protected names and/or symbols contained in this manual and related documents are the property of their respective holders.

### Disclaimer

Information in this document is subject to change without notice. The manufacturer does not make any representations or warranties (implied or otherwise) regarding the accuracy and completeness of this document and shall in no event be liable for any loss of profit or any commercial damage, including but not limited to special, incidental, consequential, or other damage.

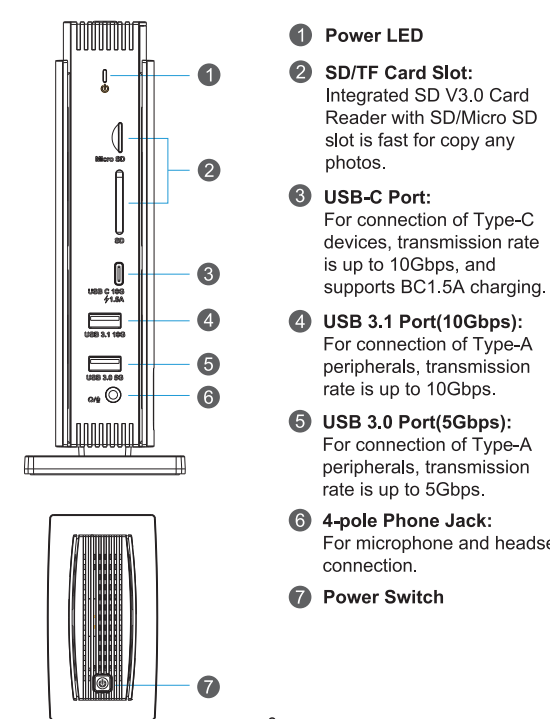
### WEEE Directive & Product Disposal

At the end of its serviceable life, this product should not be treated as household or general waste. It should be handed over to the applicable collection point for the recycling of electrical and electronic equipment, or returned to the supplier for disposal.

- 1 -

### Overview

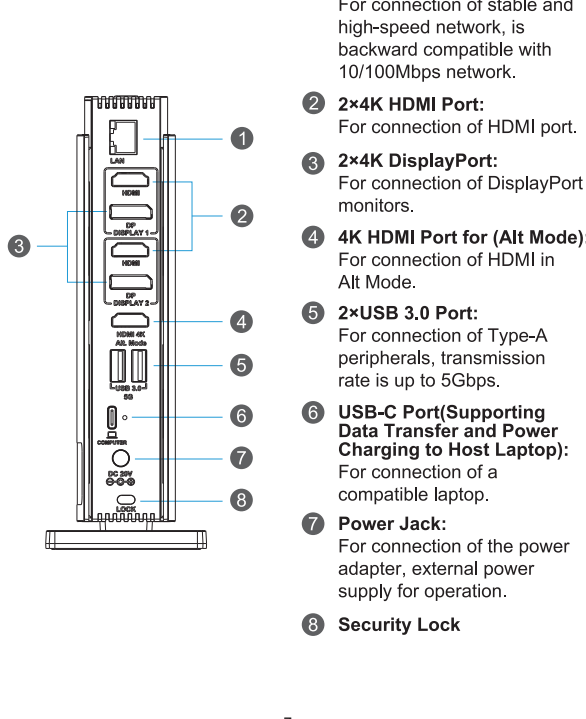
#### Front Panel



- 1 Power LED
- 2 SD/TF Card Slot: Integrated SD V3.0 Card Reader with SD/Micro SD slot is fast for copy any photos.
- 3 USB-C Port: For connection of Type-C devices, transmission rate is up to 10Gbps, and supports BC1.5A charging.
- 4 USB 3.1 Port(10Gbps): For connection of Type-A peripherals, transmission rate is up to 10Gbps.
- 5 USB 3.0 Port(5Gbps): For connection of Type-A peripherals, transmission rate is up to 5Gbps.
- 6 4-pole Phone Jack: For microphone and headset connection.
- 7 Power Switch

- 2 -

#### Rear Panel



- 1 RJ45 Gigabit Ethernet Port: For connection of stable and high-speed network, is backward compatible with 10/100Mbps network.
- 2 2x4K HDMI Port: For connection of HDMI port.
- 3 2x4K DisplayPort: For connection of DisplayPort monitors.
- 4 4K HDMI Port for (Alt Mode): For connection of HDMI in Alt Mode.
- 5 2xUSB 3.0 Port: For connection of Type-A peripherals, transmission rate is up to 5Gbps.
- 6 USB-C Port(Supporting Data Transfer and Power Charging to Host Laptop): For connection of a compatible laptop.
- 7 Power Jack: For connection of the power adapter, external power supply for operation.
- 8 Security Lock

- 3 -

### System Requirement

- USB-C 3.1 laptops supporting USB Power Delivery and Thunderbolt
- CPU Processor: Core i5 or above
- RAM: 4GB
- Full-screen Video Playback

### In the Box

- 1xUSB-C 10G Triple 4K Display Universal Docking Station
- 1xUSB-C to USB-C Cable
- 1xDC20V/5A 100W Power Adapter
- 1xCable Holder
- 1xQuick Start Guide

### Features

- Working with USB Type-C, Thunderbolt & USB Type-A laptop.
- 100W power delivery with maximum 65W upstream charging for your laptop via host USB-C port.
- One Alt Mode HDMI, two HDMI ports and two DisplayPort support up to 3048x2160@60Hz video output, and allow you to connect multiple screens.
- One USB 3.1 Type-C (10Gbps) supports BC1.2 fast charging, one USB 3.1 Type-A (10Gbps) and three USB 3.0 Type-A (5Gbps) ports extend more connectivity for your USB devices.
- RJ-45 Gigabit Ethernet port supports stable and high-speed network and is backward compatible with 10/100Mbps Ethernet network.
- SD/Micro SD slot supporting integrated SD V3.0 Card Reader provides 104MB/s transmission rate and is fast for copy any photos.
- Integrated TRRS 4-pole Phone Jack provides audio speaker out and mic in.

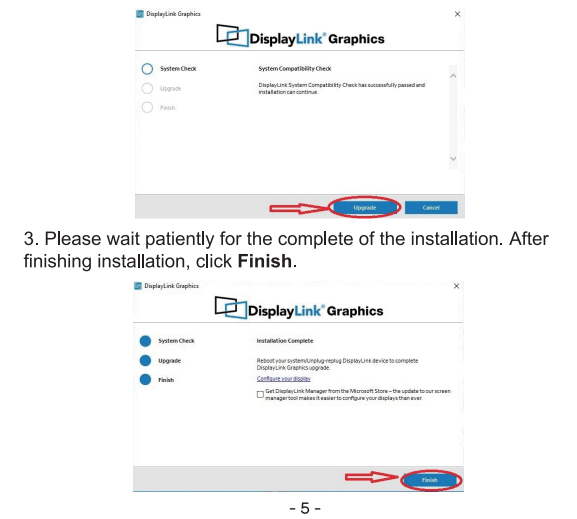
- 4 -

### Driver Installation

Before using this docking station, please enter the [www.wavlink.com/en\\_us/WL-UG69PD13](http://www.wavlink.com/en_us/WL-UG69PD13) or visit [www.wavlink.com](http://www.wavlink.com) and click **SUPPORT>Driver>USB DISPLAY>WL-UG69PD13** to find and download the corresponding driver for this docking station and install it as the following steps:

**For Windows**

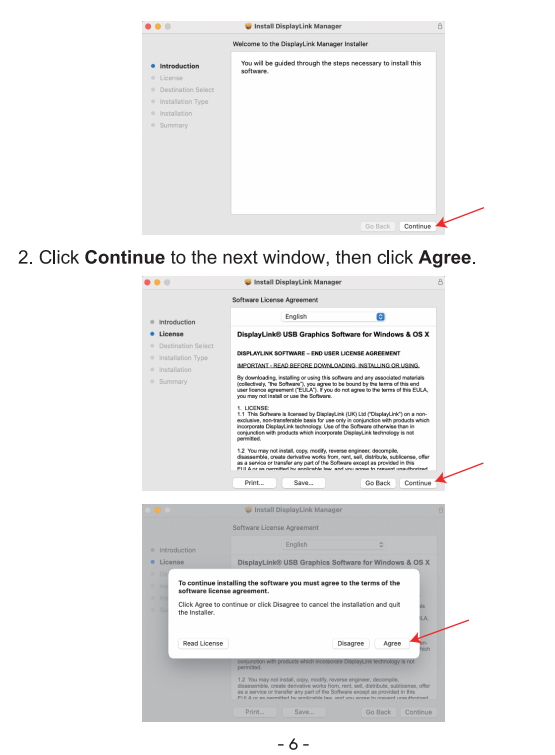
1. Locate the downloaded folder and double-click the driver file you just downloaded.
2. If there is no DisplayLink Driver in your Windows computer, click **Install** and follow the guide to install the Driver. If your Windows host has ever installed the Driver, open the file and then click **Upgrade**.



- 5 -

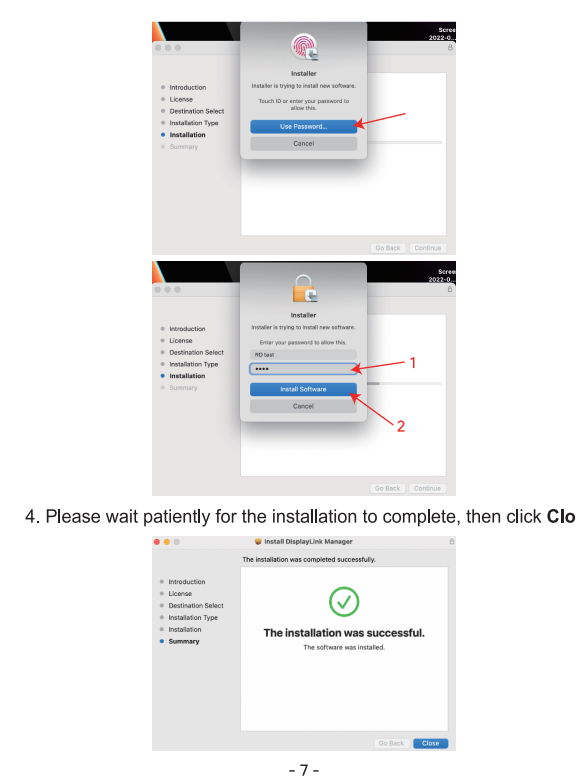
**For Mac**

1. Double-click the driver file you just downloaded, navigate to the **Install DisplayLink Manager** window, click **Continue**.



- 6 -

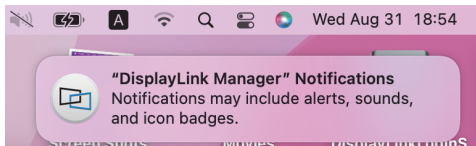
3. Click **Install** and choose **Use Password...**, then enter the screen password and click **Install Software**.



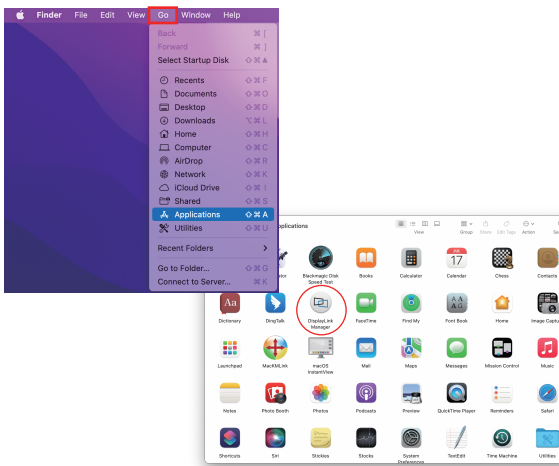
4. Please wait patiently for the installation to complete, then click **Close**.

- 7 -

5. If you have enabled notifications from DisplayLink Manager, it will remind you to allow screen recording when it detects that this permission is missing.

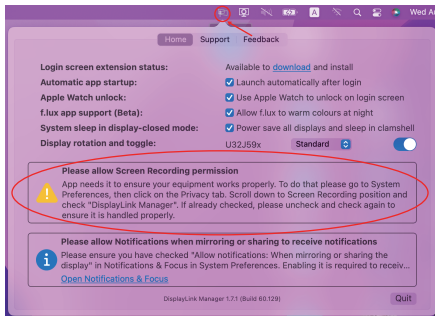


6. If you didn't get the notification from DisplayLink Manager, please click **Go** in the function bar at the top left of screen, then select **Applications** and click **DisplayLink Manager**.

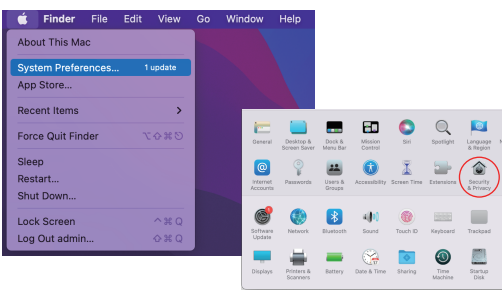


- 8 -

7. Click the **DisplayLink Graphics** icon in the function bar at the top right of the screen, and the notification will also appear in the DisplayLink Manager window. A warning is found here, you should allow the screen recording permission for DisplayLink Manager.

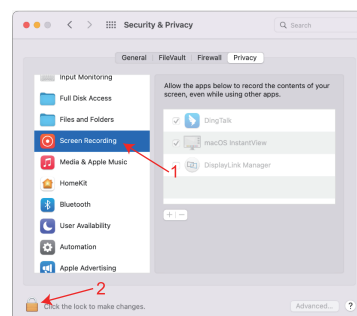


8. Click the **Apple icon->System Preferences**, then double click **Security & Privacy**.

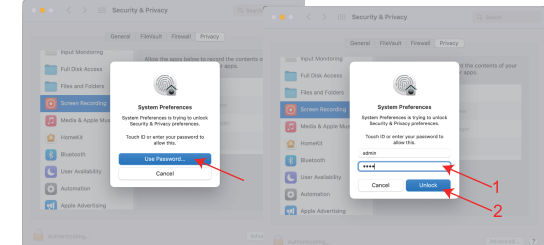


- 9 -

9. Enable **Screen Recording** to allow the DisplayLink Manager application to capture pixels and send them to your USB peripheral.
- 9.1 Select **Screen Recording in Privacy** tab.
- 9.2 Click the **lock** icon at the bottom left of the window to unlock.

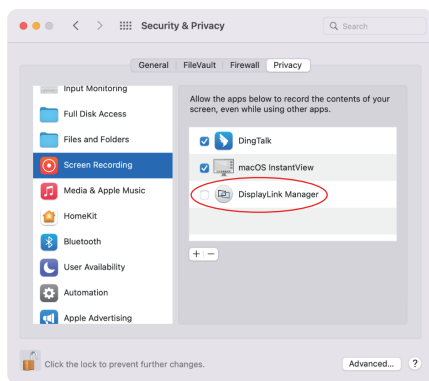


10. When the small window pops up, choose a password or use your fingerprint to unlock.
- 10.1 If you use password to unlock, and click **Use Password**, then enter your password and choose **Unlock**.



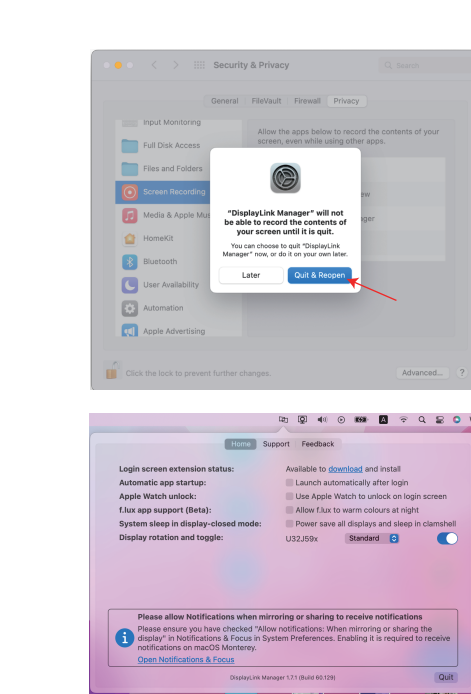
- 10 -

- 10.2 If you use fingerprint to unlock, it will jump directly to the next step.
11. Check the **DisplayLink Manager** in the right list.



12. Click **Quit & Reopen** to restart the driver, then you can click the **DisplayLink Graphics** icon in the function bar at the top right of the screen to ensure whether the warning has been lifted and whether the driver can work properly.

- 11 -

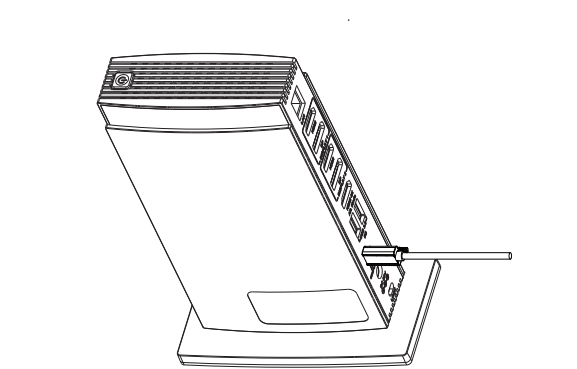


- 12 -

### How to Set Up

If you worried that the cable might loosen, herein please follow the steps to install the cable holder.

1. Insert the cable into the cable holder according to the arrow direction shown in the following picture.
2. Align the bolt with the fixing hole then connect it to the USB-C(host) port.
3. Lastly, please fasten the bolt and fix the connectivity between the cable and the dock.



**Notes:**

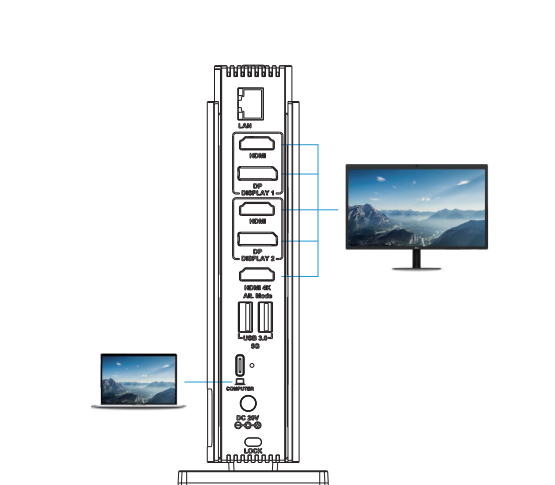
- 1.The USB-C(host) port charges your laptop with maximum 65W power.
- 2.Before you start to use this product, please download the corresponding driver for the dock (the driver installation instruction is included in the file).

- 13 -

### Installation

**Single Monitor Installation**

- 1.Connect your host laptop to USB-C port of the dock.
- 2.Connect your monitor to HDMI 3 port(Alt Mode) of the dock.
- 3.Connect another monitor to the HDMI 1/DisplayPort 1 or HDMI 2/DisplayPort 2 port of the dock.
- 4.Connect this docking station to a power outlet.

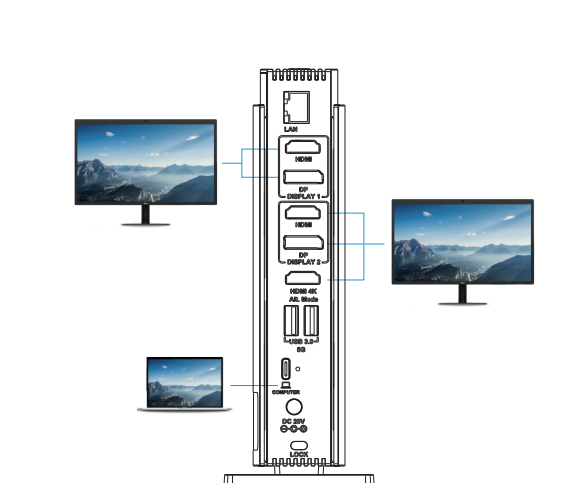


In DISPLAY 1 and DISPLAY 2, DisplayPort and HDMI port cannot be used simultaneously, thus, you can only use one port in each video stream group.

- 14 -

**Dual Monitor Installation**

- 1.Connect your host laptop to USB-C port of the dock.
- 2.Connect your monitor to HDMI 3 port(Alt Mode) of the dock.
- 3.Connect another monitor to the HDMI 1/DisplayPort 1 or HDMI 2/DisplayPort 2 port of the dock.
- 4.Connect this docking station to a power outlet.

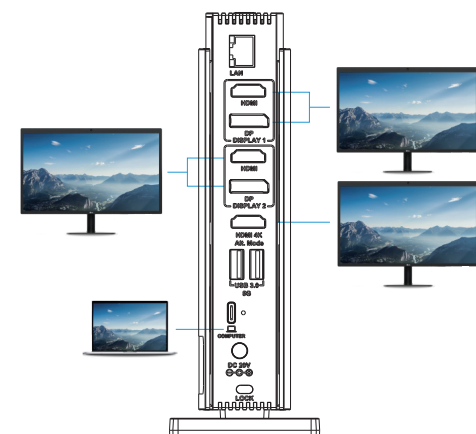


In DISPLAY 1 and DISPLAY 2, DisplayPort and HDMI port cannot be used simultaneously, thus, you can only use one port in each video stream group.

- 15 -

### Triple Monitors

- 1.Connect your host laptop to the USB-C port of the dock.
- 2.Connect one monitor to HDMI 1/DisplayPort 1 port of the dock.
- 3.Connect another monitor to the HDMI 2/DisplayPort 2 port of the dock.
- 4.Connect the other monitor to the HDMI 3(Alt Mode) port of the dock.
- 5.Connect this docking station to a power outlet.



In DISPLAY 1 and DISPLAY 2, DisplayPort and HDMI port cannot be used simultaneously, thus, you can only use one port in each video stream group.

- 16 -

HDMI 3(Alt Mode) port supports 4K@30Hz in DP 1.2 and supports 4K@60Hz in DP 1.4.

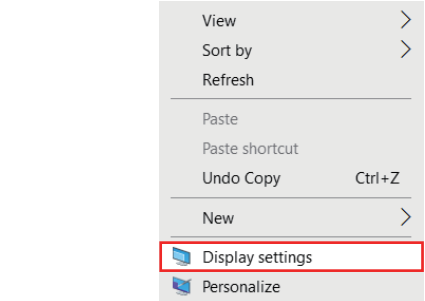
Item	Port	Resolution
Single Display	HDMI 1	4K@60Hz
	HDMI 2	4K@60Hz
	HDMI 3	4K@60Hz
	DisplayPort 1(DP 1)	4K@60Hz
Dual Display	DisplayPort 2(DP 2)	4K@60Hz
	HDMI 1+HDMI 3	4K@60Hz
	HDMI 2+HDMI 3	4K@60Hz
	HDMI 2+DP 1	4K@60Hz
Triple Display	HDMI 1+HDMI 2+HDMI 3	4K@60Hz
	HDMI 1+HDMI 3+DP 2	4K@60Hz
	HDMI 2+HDMI 3+DP 1	4K@60Hz
	HDMI 3+DP 1+DP 2	4K@60Hz

- 17 -

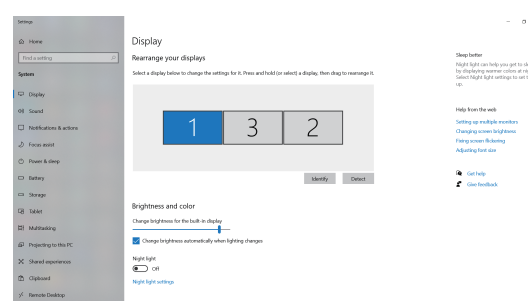
### Display Mode Setting

**For Windows Users**

- 1.Right-click at any spot on your desktop and select **"Display settings"**.



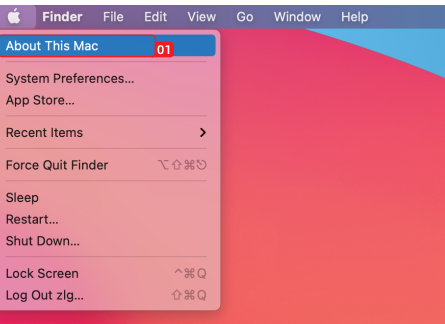
- 2.After entering **"Display settings"**, enjoy different operations of duplicating, extending and rotating on your monitors.



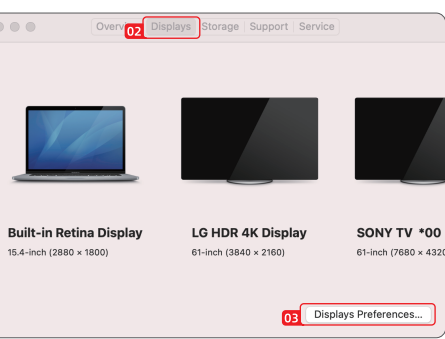
- 18 -

### For Mac OS X12 or Below

1. Click Apple icon-> **About This Mac**

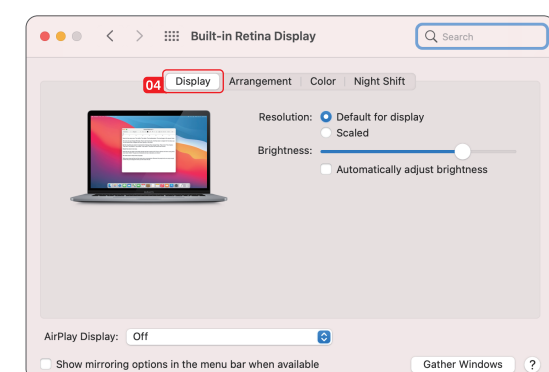


2. Click **Displays->Displays Preferences**

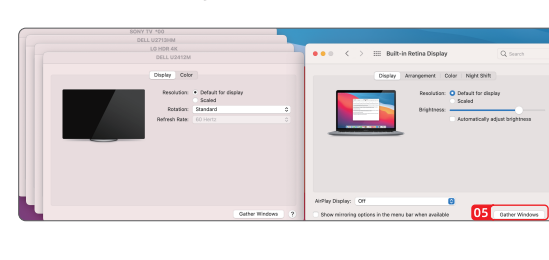


- 19 -

3. Select **"Display"** from the list, then you can enjoy different operations of mirroring, expanding and rotating on your monitors.



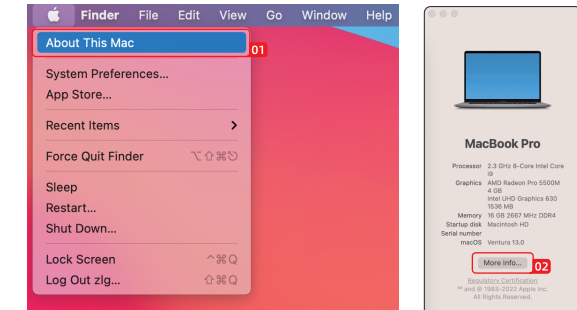
4. Or click **"Gather Windows"** to gather all connected displays and make separate settings.



- 20 -

**For Mac OS X13**

1. Click Apple icon->**About This Mac**
2. Click **"More Info..."**



3. Select **"Displays"** from the list, then you can enjoy different operations of mirroring, expanding and rotating on your monitors.



- 21 -

### FAQ

- Q1: Why does my dock get hot when I use it?**  
**A1:** This is what it's supposed to be like when the dock is working. We suggest that you put the dock in a relatively open area for a better heat dissipation.
- Q2: Why is there no display after I connect the dock to the USB-C port of my laptop?**  
**A2:** Please make sure that your laptop is the latest version, and you have installed the latest driver. At last, please check if the USB-C port of your laptop port supports data transmission.
- Q3: What should I do if the dock cannot deliver power to my host laptop?**  
**A3:** Please make sure that your laptop supports USB-C power delivery.
- Q4: Why can't I extend my display monitors?**  
**A4:** Please make sure your dock is recognized in **"task management"** and make sure you have installed the latest drivers.

Official website: [www.wavlink.com](http://www.wavlink.com)  
Technical support: [support@wavlink.com](mailto:support@wavlink.com)

- 22 -