



# QUICK START GUIDE

## AX900 WiFi 6 Wireless USB Adapter



[www.wavlink.com/en\\_us/WL-WN681X2BEF-C](http://www.wavlink.com/en_us/WL-WN681X2BEF-C)

Scan the QR code or load the link for Quick  
Start Guide and Driver downloading



WAVLINK (@WavlinkOfficial)  
WAVLINK SUPPORT (@WavlinkTechSupport)

WL-WN681X2BEF

## Introduction

AX900 WiFi 6 wireless USB adapter supports the latest Wi-Fi 6 standard, providing powerful network connectivity for your PC or laptop. Simply plug it into a USB 2.0 port for high-speed internet access(up to 600Mbps on the 5 GHz band and up to 287Mbps on the 2.4 GHz band).

Users can choose between the two bands based on the network environment and device conditions. Bluetooth 5.3 connection gets rid of line system, convenient and swift. Equipped with an external high-gain antenna that can be freely rotated 90°on its side, this adapter may be adjusted to improve signal sensitivity, achieving a high-speed and stable internet experience.

## In the Box

- 1 x AX900 WiFi 6 Wireless USB Adapter
- 1 x Quick Start Guide

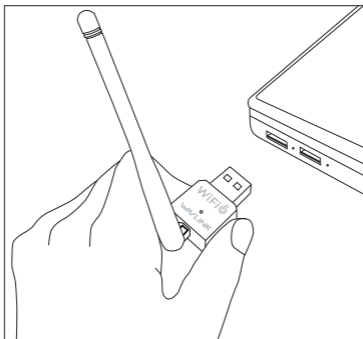
## System Requirement

- Windows 10/11

# Driver Installation

## I .Automatic Installation

Connect the AX900 WiFi 6 Wireless USB Adapter to your laptop/PC. The computer will automatically install or update the required drivers, and you can use it once the driver installation is completed.



**Note:** If your PC/laptop has already installed the driver, then it's plug & play for you.

## II .Manual Installation

1. Plug in the wireless adapter, then the USB flash drive file will automatically pop up as the following picture showing. Click the “**exe**” file to activate the installation. If the USB flash drive does not pop up, click “**This PC**” and you can find the USB flash drive. Then double click on the file, and complete the driver installation as prompt.

名称	修改日期	类型	大小
 AutoRun.inf	2024/1/22 15:47	安装信息	1 KB
 WN681X2BEF_WN681X2EF-5001.19.113.0.exe	2024/12/26 16:42	应用程序	7,445 KB

## Network Connection

- 1.Click on the network icon in the taskbar.
- 2.2.Select your WiFi network, click Connect and enter the password when prompted.



WAVLINK\_WIFI\_2.4G

安全

Enter the network security key

Next

Cancel



WAVLINK\_WIFI\_5G



WAVLINK\_WIFI\_Guest

# Need help?

We're here for you!



**Online support: [wavlink.com](http://wavlink.com)**

Available Mon-Fri 8:30 am-5:30pm (UTC+8)



**[support@wavlink.com](mailto:support@wavlink.com)**

Available Mon-Fri 8:30 am-5:30pm (UTC+8)



**+1 8889730883 (US Local)**

Mon-Fri 9:00 am - 10:00 pm (UTC-5)

**[www.wavlink.com](http://www.wavlink.com)**



**Thank you for purchasing  
WAVLINK product!**