

WAVLINK

see the world

QUICK START GUIDE

USB-C Quad Display Hub



www.wavlink.com/en_us/WL-UMD304

Scan the QR code or load the link for
Quick Start Guide downloading

WL-UMD304



WAVLINK (@WavlinkOfficial)
WAVLINK SUPPORT (@WavlinkTechSupport)

Safety Instructions

Always read the safety instructions carefully.

Keep this Quick Start Guide for future reference.

Keep this equipment away from humidity.

If any of the following situation arises, get the equipment checked by a service technician:

- The equipment has been exposed to moisture.
- The equipment has been dropped and damaged.
- The equipment has obvious sign of breakage.
- The equipment has not been working well or you cannot get it work according to Quick Start Guide.

Copyright Statement

No part of this publication may be reproduced in any form by any means without the prior written permission.

Other trademarks or brand names mentioned herein are trademarks or registered trademarks of their respective companies.

Disclaimer

Information in this document is subject to change without notice. The manufacturer does not make any representations or warranties (implied or otherwise) regarding the accuracy and completeness of this document and shall in no event be liable for any loss of profit or any commercial damage, including but not limited to special, incidental, consequential, or other damage.

WEEE Directive & Product Disposal



At the end of its serviceable life, this product should not be treated as household or general waste. It should be handed over to the applicable collection point for the recycling of electrical and electronic equipment, or returned to the supplier for disposal.

Introduction

This quad display hub station can help your laptop connect with different devices simultaneously, small but powerful. HDMI, DP and VGA ports output HD video.

Features

- Compatible with laptop or smartphone with USB-C port.
- Three USB-A ports transfer speed up to 480Mbps.
- Support SST(Single-Stream Transport) and MST(Multi-Stream Transport).
- Quad Display(HDMI 1+HDMI 2+DP+VGA)for video output, triple display supports maximum up to 4K resolution.

System Requirements

- Microsoft Windows 7/8/10/11
- Mac OS 10.8 or later(Extend only one display)
- Android
- Requires your computer/smartphone has at least one full-functional USB-C port(Data Transfer, Power Delivery and DP Alt Mode).

In the Box

- 1 × USB-C Quad Display Hub
- 1 × Quick Start Guide

Single Display

Items	Windows		Mac	
	Extend DP1.2	Extend DP1.4 & DSC1.2	Mirror DP1.2	Mirror DP1.4 & DSC1.2
HDMI 1	4K@60Hz	4K@60Hz	4K@60Hz	4K@60Hz
HDMI 2	4K@60Hz	4K@60Hz	4K@60Hz	4K@60Hz
VGA	1080P@60Hz	1080P@60Hz	1080P@60Hz	1080P@60Hz
DP	4K@60Hz	4K@60Hz	4K@60Hz	4K@60Hz

Dual Display

Items	Windows		Mac	
	Extend DP1.2	Extend DP1.4 & DSC1.2	Mirror DP1.2	Mirror DP1.4 & DSC1.2
HDMI 1+HDMI2	4K@30Hz + 4K@30Hz	4K@30Hz + 4K@60Hz	4K@60Hz	
HDMI 1+DP	4K@30Hz + 4K@30Hz	4K@30Hz + 4K@60Hz	4K@60Hz	
HDMI 1+VGA	4K@30Hz + 1080P@60Hz	4K@30Hz + 1080P@60Hz	1080P@60Hz	
HDMI 2+DP	4K@30Hz + 4K@30Hz	4K@60Hz + 4K@60Hz	4K@60Hz	
HDMI 2+VGA	4K@30Hz + 1080P@60Hz	4K@60Hz + 1080P@60Hz	1080P@60Hz	
DP+VGA	4K@30Hz + 1080P@60Hz	4K@60Hz + 1080P@60Hz	1080P@60Hz	

Note: When connected with Apple M1 computer, our product supports only 1 external monitor.

Triple Display

Items	Windows		Mac	
	Extend DP1.2	Extend DP1.4 & DSC1.2	Mirror DP1.2	Mirror DP1.4 & DSC1.2
HDMI 1+ HDMI 2 + DP	4K@30Hz+1080P@60Hz+1080P@60Hz	4K@30Hz+4K@60Hz+1080P@60Hz	4K@60Hz	
HDMI 1+ HDMI 2 + VGA		4K@30Hz+4K@60Hz+1080P@60Hz	1080P@60Hz	
HDMI 2+ DP + VGA		4K@60Hz+4K@30Hz+1080P@60Hz	1080P@60Hz	
HDMI 1+ DP + VGA		4K@30Hz+4K@60Hz+1080P@60Hz	1080P@60Hz	

Note: When connected with Apple M1 computer, our product supports only 1 external monitor.

Quad Display

Items	Windows		Mac	
	Extend DP1.2	Extend DP1.4 & DSC1.2	Mirror DP1.2	Mirror DP1.4 & DSC1.2
HDMI 1+HDMI 2+VGA+DP	Not supported	4 x 1080P@60Hz	1080P@60Hz	1080P@60Hz

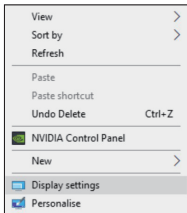
Note:

- When connected with Apple M1 computer, our product supports 1 external monitor.
- 4K refers to 3840 x 2160

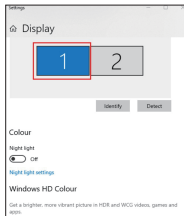
Display Settings

For Windows Users

1. Right-click at any spot on your desktop and select **“Display settings”**.



2. In **“Display”**, please select either monitor 1 or monitor 2.



3. Scroll down to the “**Multiple displays**”, and select the mode in the drop-down list that fits for your need.

Multiple displays

Duplicate these displays

Extend these displays

Show only on 1

Show only on 2

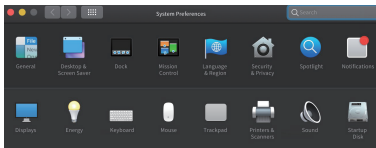
[Connect to a wireless display](#)

[Advanced display settings](#)

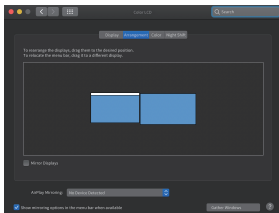
[Graphics settings](#)

For Mac OS Users

1. Select “**System Preferences**” and choose “**Displays**”.

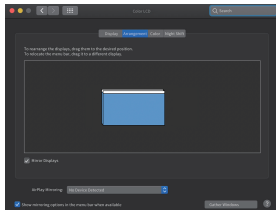


2. Click on **“Arrangement”** to change the position of displays currently connected.



Extend Mode

3. Select either extend or mirror mode on your demand.



Mirror Mode

Operation Step

1. Make sure that the resolution of your screen meets the corresponding requirements.
2. Connect the hub to a compatible laptop or smartphone via USB-C/M.
3. Connect the HDMI screen to the hub with an HDMI cable.
4. Connect the VGA screen to the hub with a VGA cable.
5. Connect the DP screen to the hub with a DP cable.
6. Now you can see the user interface in the screens.
7. Insert the USB-disk into USB 2.0 ports to transfer data.

Notice

1. Make sure the pin in the port does not sag or curve, so as not to affect its pluggable function.
2. Keep liquids away from the product to prevent mechanics damage.
3. Please keep the product in a dry, clean environment.

Tips

1. HDMI, DP and VGA ports only can be used when the USB-C port of your host device(laptop/smart-phone/tablet) supports output video.
2. USB-A port is not compatible with Apple SuperDrive/Nintendo and it is not recommended that you charge a tablet or iPad through it.
3. Some laptops may have a limitation on power output and it is recommended that you only connect an HDD/SSD external hard drive at a time.
4. For security, please use the adapter or cable that is original or owns a third-party certification to charge your laptop.
5. Only the laptop with VESA DisplayPort(DP) v1.4(HBR3) can output 4K@60Hz videos with this hub.

Q&A

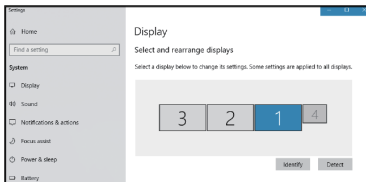
Q1. How to figure out the maximum resolution (DP1.2/DP1.4) my laptop supports?

- A1. 1. Firstly check the Graphics card version of your laptop; *Find “**display adapter**” in “**Device Manager**”.
2. Check the information of Intel processors for details from <https://www.intel.com/content/www/us/en/support/products/80939/graphics-drivers.html>

Q2. Why doesn't my third monitor display when I set the triple display mode?

A2. **Step 1:** Choose the main display

1. Right-click to select “**Display settings**”.
2. Choose a monitor display and scroll down to “**Multiple displays**”.

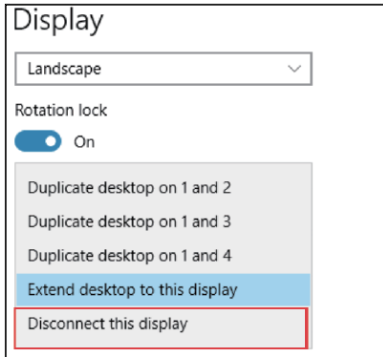


3. Mark “**Make this my main display**”.



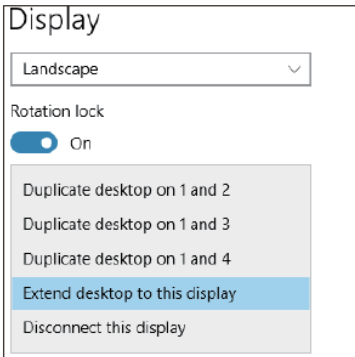
Step 2: Disconnect laptop display

1. Select the laptop display ("1" is the default display for laptop) and scroll down to "**Multiple displays**".
2. Select "**Disconnect this display**", then laptop display panel will become disconnected.



Step 3: Turn on the third monitor display

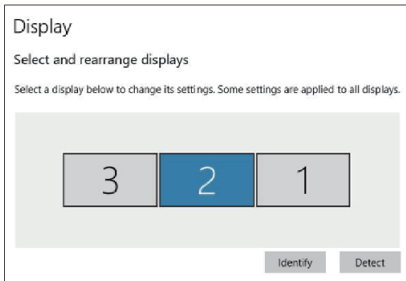
1. Choose the remaining monitor display then scroll down to “**Multiple displays**”.
2. Select “**Extend desktop to this display**” to enable this display.



Q3. Why are my 2K and 4K monitors display abnormal when I set dual or triple display mode?

A3. The resolution of some branded monitors cannot be adjusted automatically, the “**Active signal resolution**” of which is different from Windows setting “**Desktop resolution**”, hence you had better set the resolution at the same value.

1. Right-click and select “**Display settings**”.
2. Select your monitor display and click on it, then scroll down to select “**Advanced display settings**”.



Customize your display



Identify Detect

Change the size of text, apps, and other items: 100% (Recommended)



Orientation

Landscape



Multiple displays

Extend these displays



☒ Make this my main display

Apply

Cancel

Advanced display settings

3. Check if resolution values of each monitor on **“Desktop resolution”** and **“Active signal resolution”** are the same.

Advanced display settings

Display information



Display 1: Connected to Intel(R) HD Graphics 620

Desktop resolution	1920 × 1080
Active signal resolution	1920 × 1080
Refresh rate (Hz)	59 Hz
Bit depth	8-bit
Color format	RGB
Color space	Standard dynamic range (SDR)

[Display adapter properties for Display 1](#)



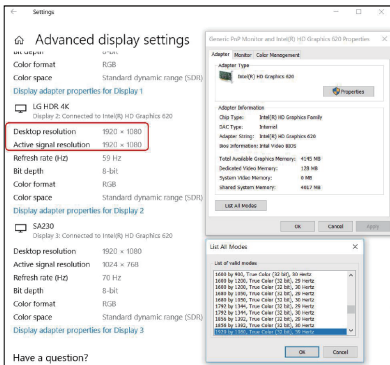
LG HDR 4K

Display 2: Connected to Intel(R) HD Graphics 620

Desktop resolution	1920 × 1080
Active signal resolution	3840 × 2160
Refresh rate (Hz)	29 Hz
Bit depth	8-bit
Color format	RGB
Color space	Standard dynamic range (SDR)

[Display adapter properties for Display 2](#)

4. Click on **“Display adapter properties for Display 2”** and lower the resolution to the right value if two values are different.



Computer Model support DP1.4 signal	Remark
HP EliteBook 840 GB	The computers supporting DP1.4 signal output depend on the specifications of computer and graphics card. This product only supports 4K@60Hz for these specifications of computers.
DELL Latitude 3420	
MacBook Pro 2020(13",2020)	
MacBook Pro 2021(16",2021)	
DELL Inspiron 14 Plus 7420	
More models will be updated regularly	

Q4: Why does this Hub power off after connecting the Hard Disk to it?

A4: That's because this port is USB 2.0 for data transmission, the power for this Hub is supplied from the Laptop/PC. When connected to some devices with high instantaneous current, there may be a problem of power-off protection due to the Standard USB 2.0(2.5 watt) Protection Point. If the working current of the equipment you connect returns to within the specified value, it will be powered on again.

GNU GENERAL PUBLIC LICENSE NOTICE

This product includes software codes developed by third parties. These software codes are subject to either the GNU General Public License (GPL), Version 2, June 1991 or the GNU Lesser General Public License (LGPL), Version 2.1, February 1999. You can copy, distribute, and/or modify in accordance with the terms and conditions of GPL or LGPL.

The source code should be complete, if you want us to provide any additional source code files under GNU General Public License (GPL) please contact us in these matters. We are committed to meeting the requirements of the GNU General Public License (GPL). You are welcome to contact our local office to get the corresponding software and licenses. Please inform us of your contact details (full address) and the product code. We will send you a software package with the software and license for free.

The respective programs are distributed WITHOUT ANY WARRANTY; without even the implied warranty Of MERCHANTABILITY or FITNESS FOR A PARTICULAR PURPOSE.

Please refer to the GNU General Public License website for further information.

<http://www.gnu.org/licenses/old-licenses/lgpl-2.0.html>

<http://www.gnu.org/licenses/gpl.html>

For more details, please refer to www.wavlink.com.

Need help?

We're here for you!



Online support: wavlink.com

Available Mon-Fri 8:30 am-5:30pm (UTC+8)



support@wavlink.com

Available Mon-Fri 8:30 am-5:30pm (UTC+8)



+1 8889730883 (US Local)

Mon-Fri 9:00 am - 10:00 pm (UTC-5)

www.wavlink.com



**Thank you for purchasing
WAVLINK product!**