



Quick Start Guide

USB-C 4K Triple Display 10G Docking Station
with PCIe/SATA M.2 SSD Enclosure



www.wavlink.com/en_us/WL-UMD23M

Scan the QR code or load the link for
Quick Start Guide and Driver downloading

WL-UMD23M



WAVLINK (@WavlinkOfficial)
WAVLINK SUPPORT (@WavlinkTechSupport)

Safety Instructions

Always read the safety instructions carefully.

Keep this Quick Start Guide for future reference.

Keep this equipment away from humidity.

If any of the following situation arises, get the equipment checked by a service technician:

- The equipment has been exposed to moisture.
- The equipment has been dropped and damaged.
- The equipment has obvious sign of breakage.
- The equipment has not been working well or you cannot get it work according to Quick Start Guide.

Copyright Statement

No part of this publication may be reproduced in any form by any means without the prior written permission. Other trademarks or brand names mentioned herein are trademarks or registered trademarks of their respective companies.

Disclaimer

Information in this document is subject to change without notice. The manufacturer does not make any representations or warranties (implied or otherwise) regarding the accuracy and completeness of this document and shall in no event be liable for any loss of profit or any commercial damage, including but not limited to special, incidental, consequential, or other damage.

WEEE Directive & Product Disposal



At the end of its serviceable life, this product should not be treated as household or general waste. It should be handed over to the applicable collection point for the recycling of electrical and electronic equipment, or returned to the supplier for disposal.

Features

- Two HDMI and DP support 4K@60Hz dual display and triple display.
- One M.2 SSD Enclosure supports PCIe and SATA dual protocols.
- One RJ45 Ethernet port provides 1000Mbps network, and is backward compatible with 100/10Mbps network.
- One USB-C PD IN port provides 100W PD for the Laptop.
- Two USB-A ports transfer speed up to 5Gbps, and are backward compatible with USB 2.0/1.1.
- One USB-C and one USB-A transfer speed up to 10Gbps and extend more connectivity to computer peripherals.
- One 4-Pole Phone Jack provides combined audio output and input from the headphone and microphone.
- One SD V3.0/Micro SD Card Reader slot transfers speed up to 104MB/s.

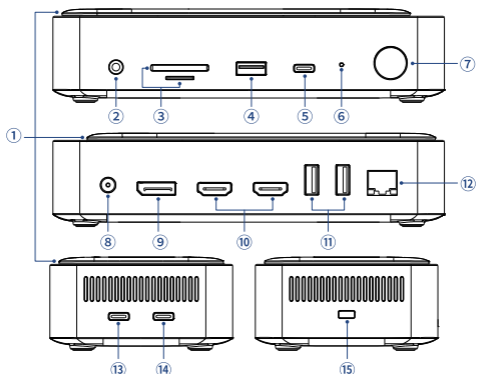
In the Box

- 1 x USB-C Docking Station
- 1 x USB-C to USB-C Cable (with E-mark)
- 1 x DC20V/2A Power Adapter
- 1 x Quick Start Guide

System Suggestion

- Microsoft Windows 10/11
- Apple Mac OS 11 or later
- CPU i7 or higher, RAM 8GB or above
- Laptop/PC at least has one Thunderbolt 3/4 or full-functional USB-C port with Video Alt Mode and Data Transfer
- To use PD function, it requires laptop to support PD3.0

Overview



- ① M.2 Enclosure (PCIe/SATA)
- ② Audio
- ③ SD/TF Card Reader
- ④ USB-A (10Gbps)
- ⑤ USB-C (10Gbps)
- ⑥ LED
- ⑦ Power Switch
- ⑧ DC IN

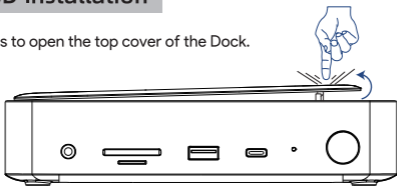
- ⑨ DisplayPort
- ⑩ HDMI
- ⑪ USB-A (5Gbps)
- ⑫ Gigabit RJ45 Ethernet
- ⑬ USB-C (Host)
- ⑭ USB-C PD IN (PD 100W)
- ⑮ Lock

Note:

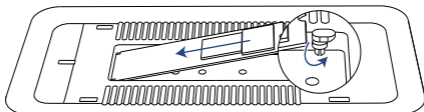
If you want to charge the computer through the upstream port, you need to connect the PD charger that comes with your computer to the USB-C PD IN interface of the Dock, otherwise the computer cannot be charged.

SSD Installation

1. Press to open the top cover of the Dock.



2. Insert your SSD into the slot.

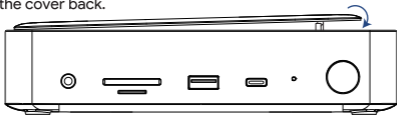


Attention:

To make the SSD operate smoothly and successfully, you need to select the correct type of SSD first, it is compatible with PCIe and SATA SSD. please refer to the pictures as following:



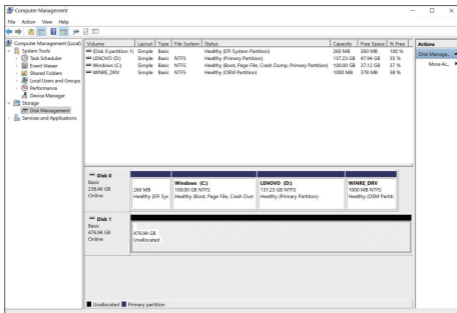
3. Put the cover back.



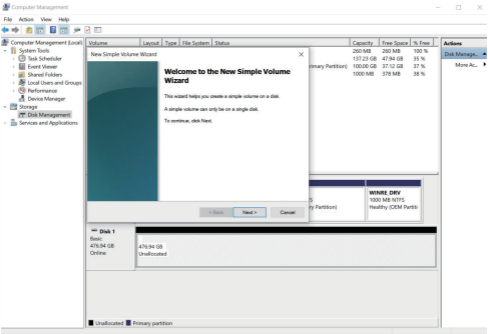
4. Partition and Format Installation.
(Only when your SSD is brand-new and unformatted)

For Windows

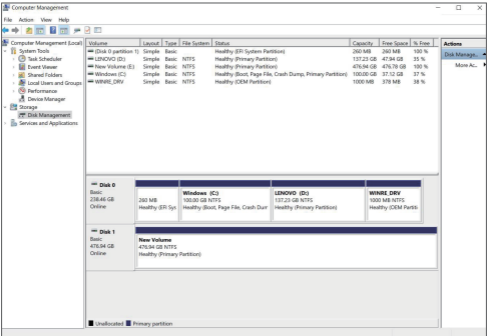
- (1) Right click your PC icon and select "Manage".



(2) Choose “Storage” then go to “Disk Management”, right click your SSD, choose “New Simple Volume” and select “Next” to proceed.

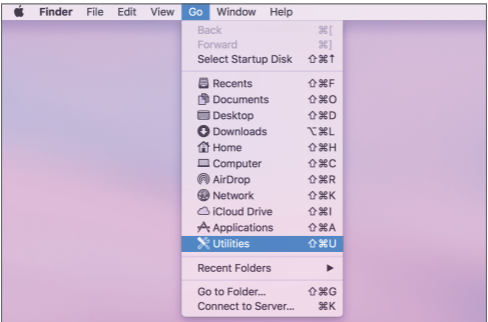


(3) Follow the instructions step by step to complete format installation.

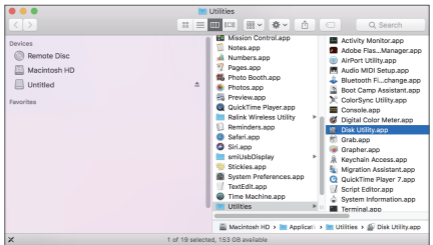


For Mac

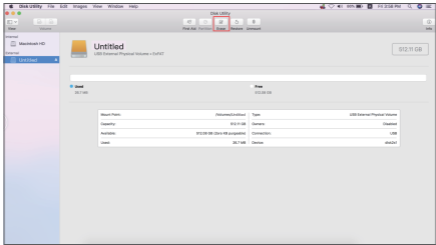
(1) From the drop-down list of “Go” in the toolbar, please select “Utilities”.



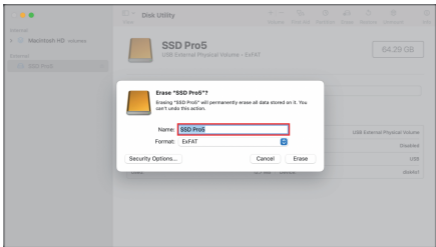
(2) Choose “Disk Utility”.



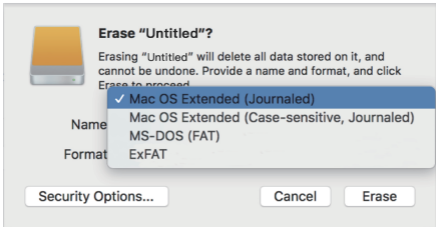
(3) Click "Erase" to pop up the Settings window.



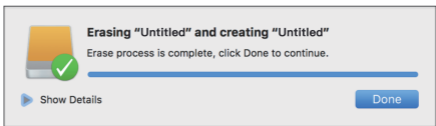
(4) Add the SSD name or use the default name in the pop-up window.



(5) Select the correct partition format SSD, then select "Erase".



(6) Press “Done” to complete the installation.



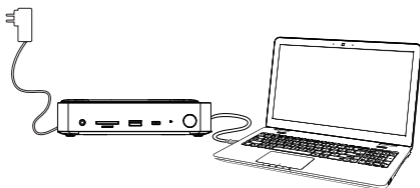
Monitor Connection

For Windows 10/11/Later and MAC OS, it is Plug and Play, so no Driver installation is needed.

Attention:

Some computers might not install Realtek network driver, therefore need to install driver to use RJ45 Ethernet port, please visit www.wavlink.com > SUPPORT > Driver > PC Peripherals > WL-UMD23M to download and manually install the Driver.

1. This Dock requires the Laptop/PC to support ALT MODE. Before connecting to the Dock, please ensure the USB-C interface of the PC/Laptops supports ALT MODE, check [Q&A: Q6](#) for details.
2. Connect the included power adapter with dock and power on by pressing the Switch button on dock.
3. Connect the USB-C port(host) to your laptop, then the LED light on the Dock will turn blue.



4. Please connect the monitors to the Dock's video ports, and configure the Display Mode.

4.1 Single Display

Items		HDMI 1	HDMI 2	DP
Windows MST	DP1.4(DSC)	3840x2160@60Hz	3840x2160@60Hz	3840x2160@60Hz
	DP1.4	3840x2160@60Hz	3840x2160@60Hz	3840x2160@30Hz
	DP1.2	3840x2160@30Hz	3840x2160@30Hz	3840x2160@30Hz
Mac SST	DP1.4	3840x2160@60Hz	3840x2160@60Hz	3840x2160@30Hz
	DP1.2	3840x2160@30Hz	3840x2160@30Hz	3840x2160@30Hz

4.2 Dual Display

Items		Dual HDMI	HDMI+DP
Windows MST	DP1.4(DSC)	Dual 3840x2160@60Hz	Dual 3840x2160@60Hz
	DP1.4	Dual 2560x1440@60Hz	Dual 2560x1440@60Hz
	DP1.2	Dual 1920x1080@60Hz	Dual 1920x1080@60Hz
Mac SST	DP1.4	Dual 3840x2160@60Hz	Dual 3840x2160@60Hz
	DP1.2	Dual 3840x2160@30Hz	Dual 3840x2160@30Hz

4.3 Triple Display

Items		HDMI 1+HDMI 2+DP
Windows MST	DP1.4(DSC)	Dual 3840x2160@60Hz+one 3840x2160@30Hz
	DP1.4	Triple 1920x1080@60Hz
	DP1.2	Triple 1600x900@60Hz
Mac SST	DP1.4	Triple 3840x2160@60Hz
	DP1.2	Triple 3840x2160@30Hz

* The above resolutions are factory test results; The resolution may be different depending on the actual situation of the computer and monitor.

Note:

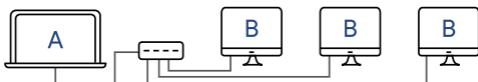
If you want to use the 3 displays with your PC/laptop simultaneously, please make sure that the Graphics card of the USB-C port supports at least 4 displays of DP ALT Mode, including your PC's own screen. Check with your PC manufacturer on this. If your Graphics card doesn't support 4 displays, please check [Q&A: Q2](#) for details.

Remarks for Windows based PC/laptops:

1. Before you connect two or three monitors, we suggest you lower monitor resolution, please check [Q&A: Q3](#) for details.
2. Before you connect three monitors, we suggest you disconnect PC/laptop first, please check [Q&A: Q2](#) for details.

Remarks for Mac based PC/laptops:

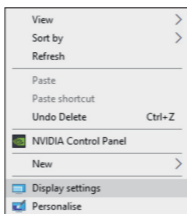
- Mac OS is Single-Stream Transport mode, so only one video source can be output such as ABB or ABBB(A is the primary display).



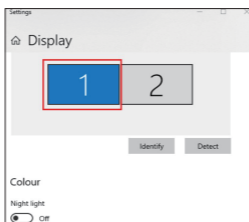
Display Mode Setting

For Windows Users

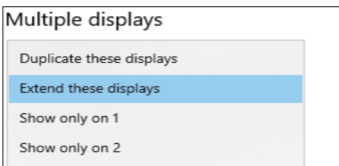
1. Right-click at any spot on your desktop and select "Display settings".



2. On "Display", please select either monitor 1 or monitor 2.

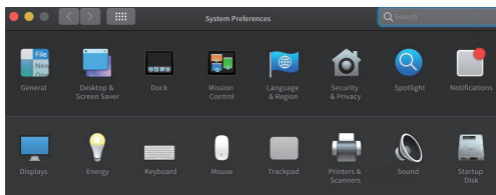


3. Scroll down to the "Multiple displays", and select the mode in the drop-down list that is fit for your need.

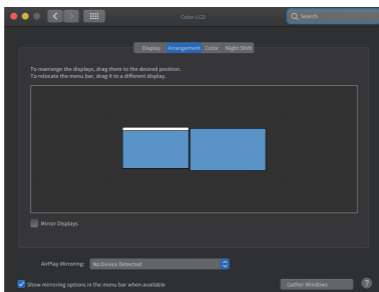


For Mac OS Users

1. Select “System Preferences” and then choose “Displays”.

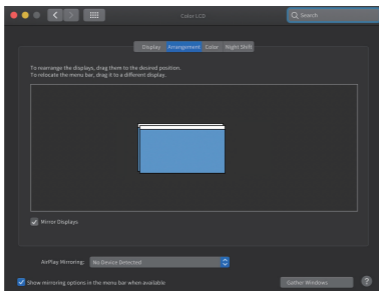


2. Click on “Arrangement” to change the position of displays currently connected.



Extend Mode

3. Select either extend or mirror mode on your demand.



Mirror Mode

Q&A

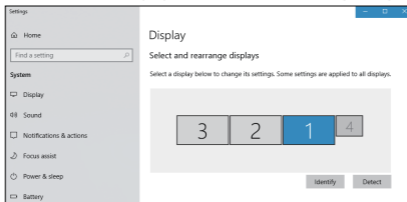
Q1. How to figure out the maximum resolution(DP1.2/DP1.4) my laptop supports?

A1. 1. Firstly check the Graphics card version of your laptop; *Find “display adapter” in “Device Manager”.
2. Check your Graphics card information with its manufacturer.

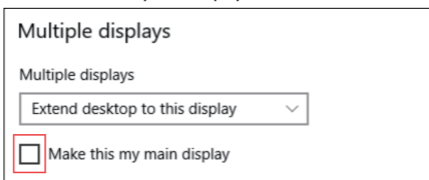
Q2. Why doesn't my third monitor display when I set the triple display mode?

A2. Step 1: Choose the main display

1. Right-click to select "Display settings".
2. Choose a monitor display and scroll down to "Multiple displays".

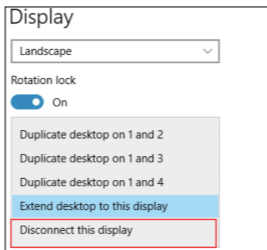


3. Mark "Make this my main display".



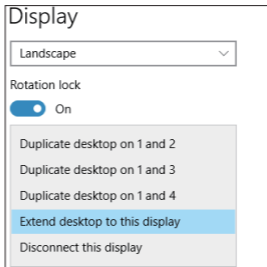
Step 2: Disconnect laptop display

1. Select the laptop display ("1" is the default display for the laptop) and scroll down to "Multiple displays".
2. Select "Disconnect this display", then the laptop display panel will become disconnected.



Step 3: Turn on the third monitor display

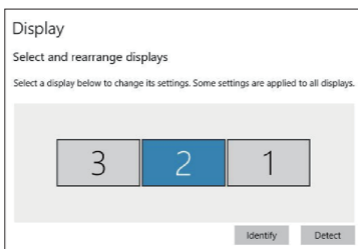
1. Choose the remaining monitor display, then scroll down to "Multiple displays".
2. Select "Extend desktop to this display" to enable this display.



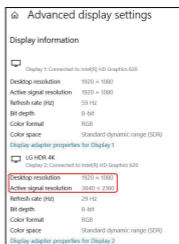
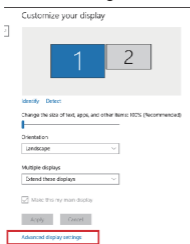
Q3. Why are my 2K and 4K monitor display abnormal when I set dual or triple display mode?

A3. The resolution of some branded monitors cannot be adjusted automatically, the “Active signal resolution” of which is different from Windows setting “Desktop resolution”, hence you’d better set the resolution at the same value.

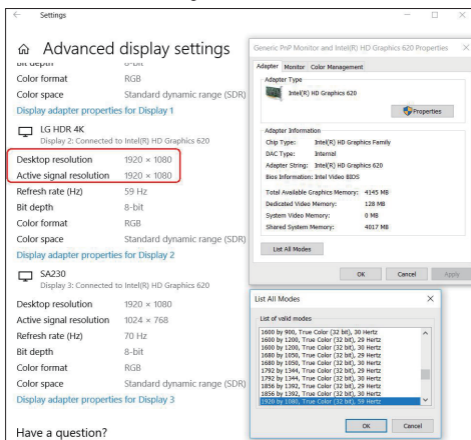
1. Right-click and select “Display settings”.
2. Select your monitor display and click on it, then scroll down to select “Advanced display settings”.



3. Check if resolution values of each monitor on “Desktop resolution” and “Active signal resolution” are the same.



4. Click on “Display adapter properties for Display 2” and lower the resolution to the right value if two values are different.



Q4. Why does it show “slow charging” on my laptop?

A4. Some users may notice that the charging status shows “slow charging”, this is because some series of laptop have protection protocol, especially laptops that have both Thunderbolt 3 port and over 100W external DC power adapter. Please use the original laptop charger to charge.

Q5. What is High Dynamic Range (HDR)?

A5. High Dynamic Range (HDR) creates much more lifelike experiences by allowing bright objects such as lights and highlights glinting off shiny objects to be displayed much more brightly than other objects in the scene. HDR also allows for more details in dark scenes. True HDR playback is not yet available on the built-in displays of laptops and tablets, and many of TVs and PC monitors start to build in HDR-10 with HDCP2.2 to support.

Some of the key HDR content sources today are:

- Streaming HDR (e.g. YouTube*) & Streaming premium HDR (e.g. Netflix*)
- Local HDR Video Files
- ULTRA HD Blu-ray*
- HDR games//
- HDR content creation apps

Also, if you need to stream HDR contents with applications like Netflix and YouTube, make sure in Windows 10 “Stream HDR Video” setting is “on” in the “Video playback settings” page.

Q6. My Laptop/PC supports PD and DP ALT MODE, why is it still not working properly?

A6. Please try to update the PC/Laptop's BIOS, Graphics Card and other Drivers to the latest version, or contact our Customer Service.

Official website: www.wavlink.com

Technical support: support@wavlink.com