

## System Requirement

- Windows 10/11
- Mac OS 11 or later
- CPU i7 or higher, RAM 8GB or above
- Laptop/PC at least has one Thunderbolt 3/4 or full-functional USB-C port with Video Alt Mode and Data Transfer

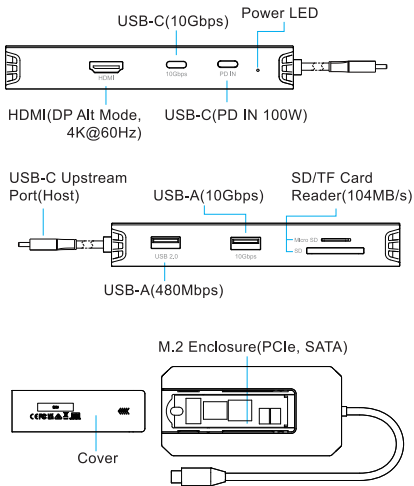
## In the Box

- 1×USB-C 10G 4K@60Hz Hub with PCIe/SATA M.2 SSD Enclosure
- 1x Thermally Conductive Silicone Pad
- 2x Silicone Buckles
- 1×Quick Start Guide

## Features

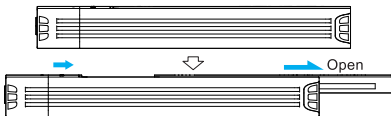
- One M.2 SSD Enclosure supports PCIe and SATA dual protocols.
- One DP Alt Mode, HDMI port supports max. 4K@60Hz single display.
- One USB-C PD IN port provides 100W PD for the hub.
- One USB-C 10Gbps, one USB-A 10Gbps and one USB-A 480Mbps.
- One SD/TF Card Reader slot, which enables easy data reading and seamless transfer from storage cards.

# Overview

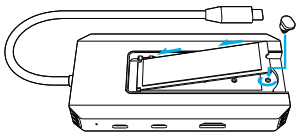


## SSD Assembly and Connection

1. Slide the top cover of the SSD enclosure in the direction indicated by the arrow to remove it.

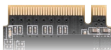


2. Remove the black fastener, align the black fastener with the slot on the hard drive, and gently push the hard drive into the slot at a 45 degree until it clicks securely in place.



Attention: To make the SSD operate smoothly and successfully, we recommend you to choose the applicable SSD size: 2230/2242/2260/2280 and applicable interface: M and B+M key.

✓  
NVMe PCIe SSD



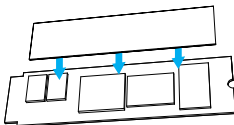
✓  
SATA SSD



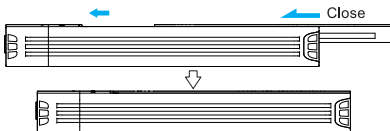
X  
mSATA SSD



3. Tear off the protective films on both sides of the thermal silicone pad, and stick them on the SSD.

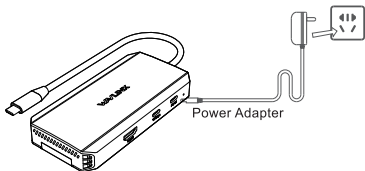


4. Reassemble the top lid in the direction of the arrow.

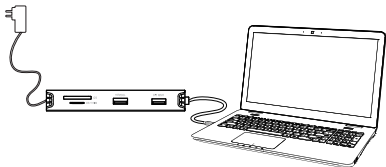


5. Connect an external Power Adapter(100W) to the USB-C PD IN port, and plug the Power Adapter into the Power Outlet.

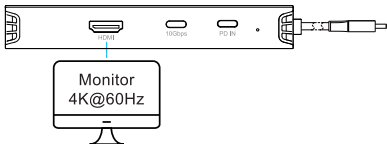




6. Connect the USB-C cable to the Host.



7. Connect the Monitor to the HDMI Alt Mode port.



Items	HDMI Alt Mode	
Windows	DP1.4(DSC)	3840×2160@60Hz
	DP1.4	3840×2160@60Hz
	DP1.2	3840×2160@30Hz
Mac	DP1.4(DSC)	3840×2160@60Hz
	DP1.4	3840×2160@60Hz
	DP1.2	3840×2160@30Hz

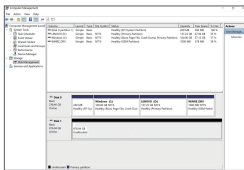
\*Above resolution is the maximum output supported, the specific resolution by monitor EDID(Extended Display Identification Data) determined.

## Partition and Format Installation

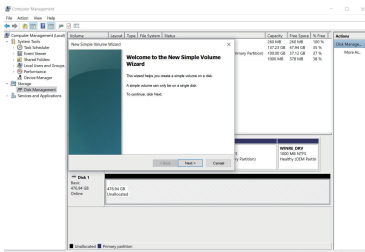
If the SSD is brand-new and unformatted, please perform partition installation so that the computer can read the data normally; If the SSD is formatted and has stored data, you have no need to perform partition installation because the computer can read the data normally.

### For Windows

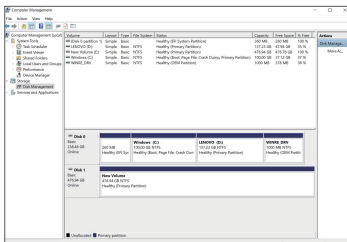
(1) Right click your PC icon and select **“Manage”**.



- (2) Choose “**Storage**” then go to “**Disk Management**”, right click your SSD, choose “**New Simple Volume**” and select “**Next**” to proceed.

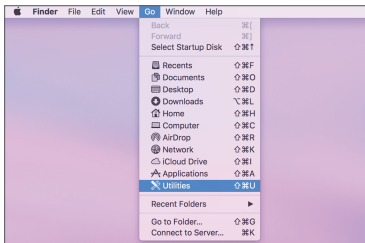


- (3) Follow the instructions step by step to complete format installation.

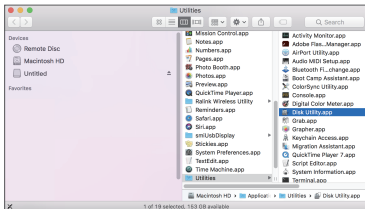


## For Mac

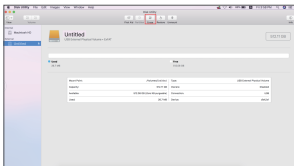
- (1) From the drop-down list of “Go” in the toolbar, please select “Utilities”.



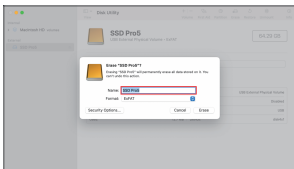
- (2) Choose “Disk Utility”.



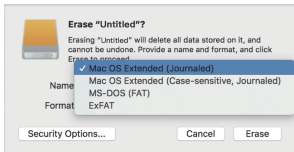
(3) Click **"Erase"** to pop up the Settings window.



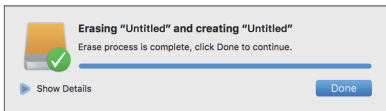
(4) Add the SSD name or use the default name in the pop-up window.



(5) Select the correct partition format SSD, then select **"Erase"**.



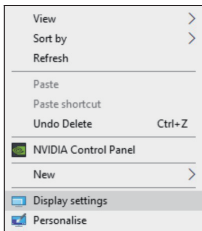
(6) Press **“Done”** to complete the installation.



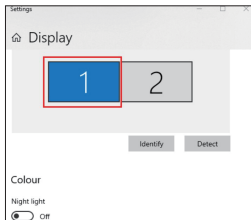
## Display Mode Setting

### For Windows Users

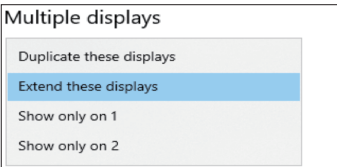
1. Right-click at any spot on your desktop and select **“Display settings”**.



2. On “**Display**”, please select either monitor 1 or monitor 2.

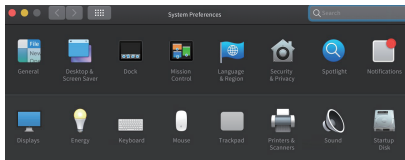


3. Scroll down to the “**Multiple displays**”, and select the mode in the drop-down list that is fit for your need.

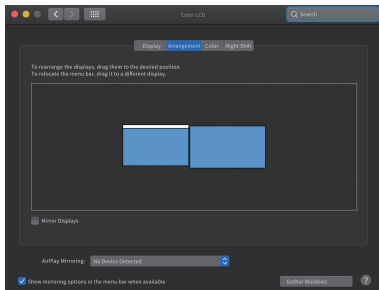


## For Mac OS Users

1. Select **“System Preferences”** and then choose **“Displays”**.



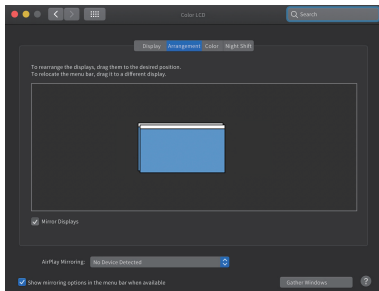
2. Click on **“Arrangement”** to change the position of displays currently connected.



Extend Mode



3. Select either extend or mirror mode on your demand.



Mirror Mode

# Need help?

We're here for you!



**Online support: [wavlink.com](http://wavlink.com)**

Available Mon-Fri 8:30 am-5:30pm (UTC+8)



**[support@wavlink.com](mailto:support@wavlink.com)**

Available Mon-Fri 8:30 am-5:30pm (UTC+8)



**+1 8889730883 (US Local)**

Mon-Fri 9:00 am - 10:00 pm (UTC-5)

**[www.wavlink.com](http://www.wavlink.com)**



**Thank you for purchasing  
WAVLINK product!**