

Safety Instructions

Always read the safety instructions carefully.

Keep this Quick Start Guide for future reference.

Keep this equipment away from humidity.

If any of the following situation arises, get the equipment checked by a service technician:

- The equipment has been exposed to moisture.
- The equipment has been dropped and damaged.
- The equipment has an obvious sign of breakage.
- The equipment has not been working well or you cannot get it work according to Quick Start Guide.

Copyright Statement

No part of this publication may be reproduced in any form by any means without the prior written permission.

Other trademarks or brand names mentioned herein are trademarks or registered trademarks of their respective companies.

Disclaimer

Information in this document is subject to change without notice.

The manufacturer does not make any representations or warranties (implied or otherwise) regarding the accuracy and completeness of this document and shall in no event be liable for any loss of profit or any commercial damage, including but not limited to special, incidental, consequential, or other damage.

WEEE Directive & Product Disposal



At the end of its serviceable life, this product should no be treated as household or general waste. It should be handed over to the applicable collection point for the recycling of electrical and electronic equipment, or returned to the supplier for disposal.

Introduction

The new USB Type-C connector works seamlessly with this Ultra HD 5K Universal Docking Station. It can connect to any host with Standard A or Type C connectors providing a fully backward-compatible and future-proof docking solution. Allow you to connect up to two additional monitors and 14 accessories including through a single USB cable. Including the latest drivers for compatibility with Windows 10, 8.1 and 7 or Apple Mac OS.

The USB-C Ultra 5K Universal Docking Station Software allows full configuration of all additional USB displays,including:

- Support for up to 6 additional USB Displays (Windows)
- Support for up to 4 additional USB Displays (Mac OS X)
- Expand USB 3.0 connectivity
- Supports dual DP or dual HDMI displays
- Gigabit Ethernet
- Mic In and Audio out
- Extended, Mirrored, Primary Display
- Extend left, right, above, or below
- Rotation

Features

- Compatible with both Type-C and Type-A Laptop/Desktop Computer
- Supports resolutions up to 5K(5120x2880@60HZ)when connecting dual DP ports simultaneously to a 5k monitor
- Dual 4K HDM/Dual 4K DisplayPort/4K HDMI+4K DisplayPort output
- Supports Extended and Mirrored Video Mode
- Supports 5.1 Channel Surround Sound through HDMI/DP ports
- Built-in USB 3.0 GPU, Plug and Display
- Separate microphone input and audio output
- SuperSpeedUSB 3.0, speed up to 5Gbps and backward compatible with 2.0/1.1
- Built-in 10/100/1000BASE-T RJ45 Gigabit Ethernet for increased network performance
- 15 Ports of Incredible Connectivity

WL-UG69DK1

- Built-in six SuperSpeed USB 3.0 (up to 5Gbps) Type-A ports, backward compatible with 2.0/1.1
- Built-in one ON/OFF power switch

WL-UG69DK7

- Aluminum alloy body
- Built-in four SuperSpeed USB 3.0 (up to 5Gbps) Type-A ports, backward compatible with 2.0/1.1
- Built-in two SuperSpeed USB 3.0 Gen 1 (up to 5Gbps) Type-C ports

In the Box

Before installation, please check the items in the package. The package should contain the following items:

- 1 x USB-C Ultra 5K Universal Docking Station
- 1 x USB 3.1 C to C Cable
- 1 x USB 3.1 A to C Cable
- 1 x Quick Start Guide
- 1 x DC20V Certified Power Adapter

System Requirement

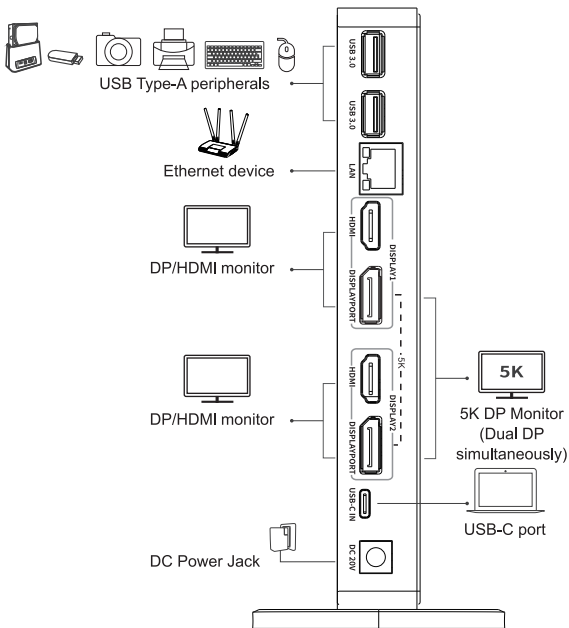
- Windows 7/8/8.1/10 or later
- Mac OS 10.9 or later

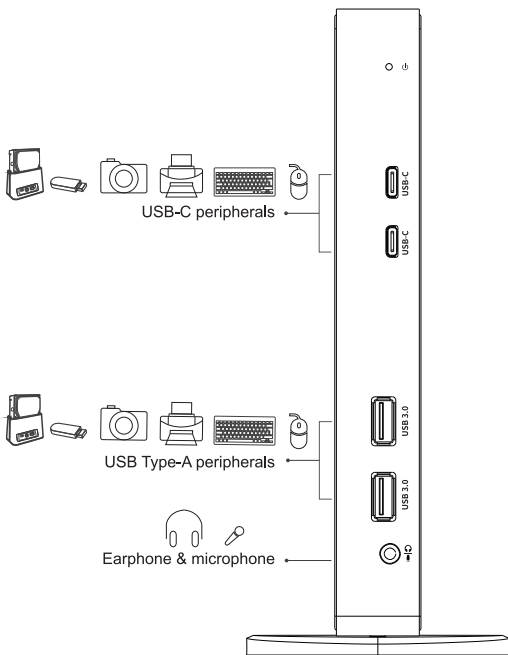
Windows XP SP2 and Vista are supported by older versions of the DisplayLink software: <http://www.displaylink.com/downloads>

Application

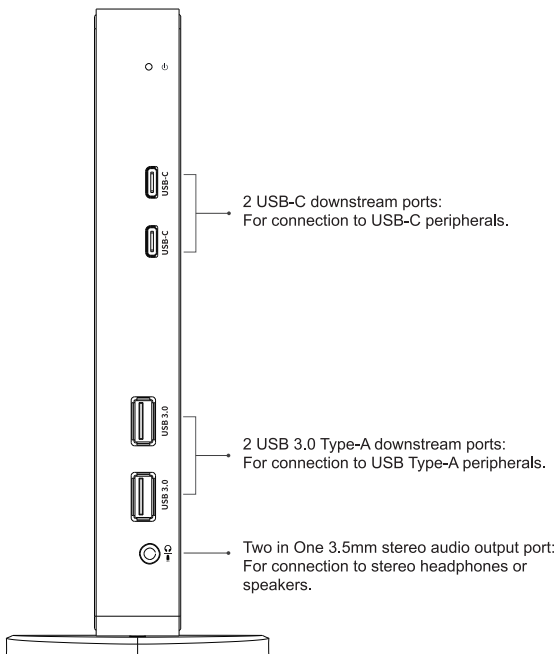
NOTE:

- On DISPLAY1, connecting HDMI and DISPLAYPORT to monitors at the same time, DISPLAYPORT will be worked priorly. Select only HDMI Or DISPLAYPORT.
- On DISPLAY2, it works same as on DISPLAY 1.





Front Panel



Rear Panel

NOTE:

- On DISPLAY1, connecting HDMI and DISPLAYPORT to monitors at the same time, DISPLAYPORT will be worked priorily. Select only HDMI or DISPLAYPORT.
- On DISPLAY2, it works same as on DISPLAY 1.

2 USB 3.0 Type-A downstream ports:

For connection of USB Type-A peripherals.

10/100/1000Mbps Ethernet port:

For connection of Ethernet network via a network cable.

HDMI and DISPLAYPORT video output ports:

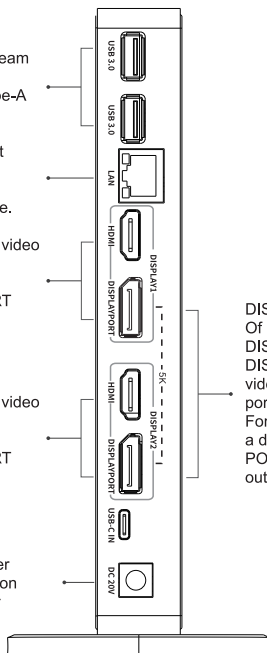
For connection of a HDMI monitor or a DISPLAYPORT monitor.

HDMI and DISPLAYPORT video output ports:

For connection of a HDMI monitor or a DISPLAYPORT monitor.

Power jack:

For connection of the power adapter. The Docking Station requires an external power supply for operation.



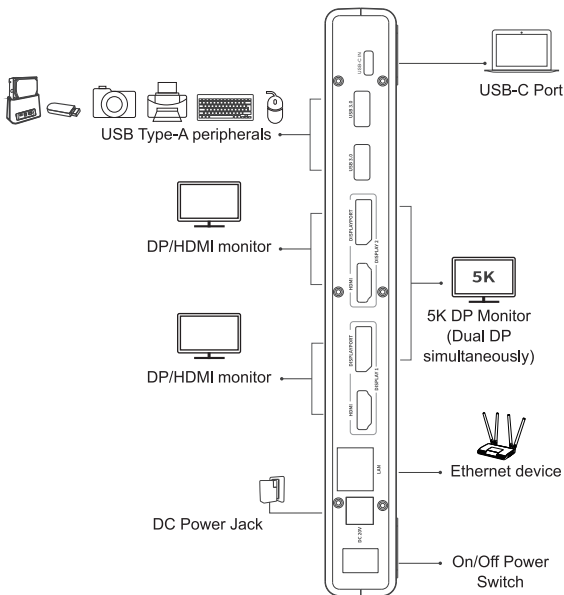
DISPLAYPORT Of DISPLAY1+ DISPLAYPORT of DISPLAY2 video output ports:

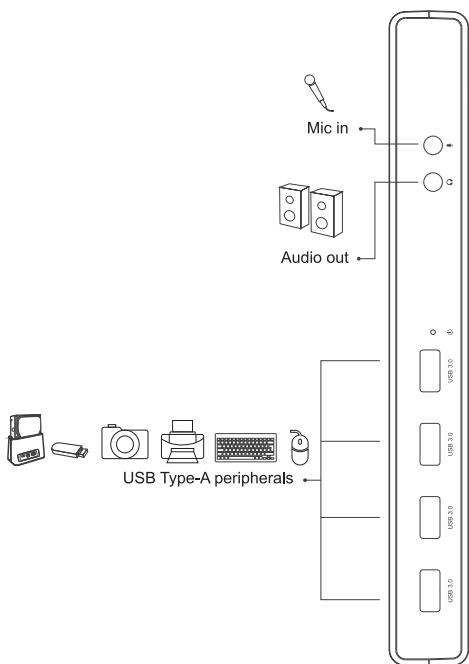
For connection of a dual-DISPLAY-PORT monitor to output 5K video.

Application

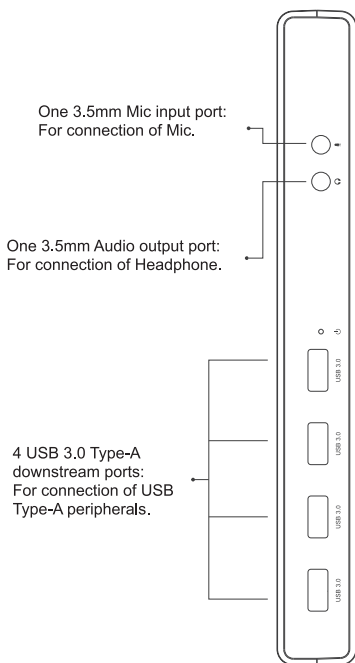
NOTE:

- On DISPLAY1, connecting HDMI and DISPLAYPORT to monitors at the same time, DISPLAYPORT will be worked priorly. Select only HDMI or DISPLAYPORT.
- On DISPLAY2, it works same as on DISPLAY 1.





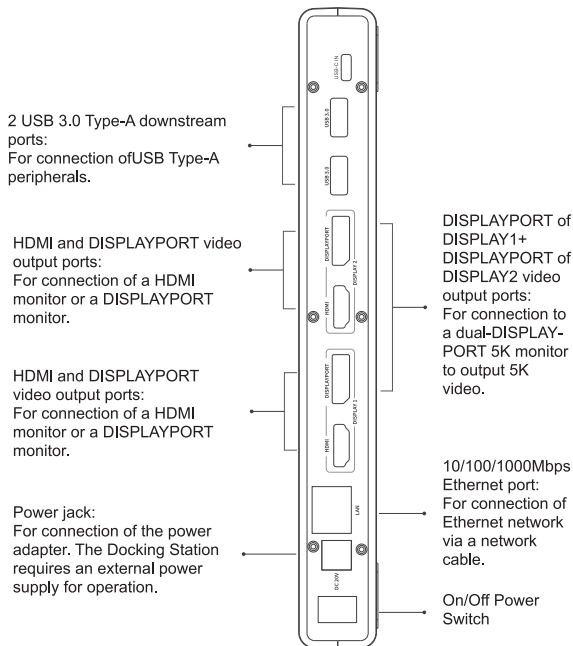
Front Panel



Rear Panel

NOTE:

- On DISPLAY1, connecting HDMI and DISPLAYPORT to monitors at the same time, DISPLAYPORT will be worked priorly. Select only HDMI or DISPLAYPORT.
- On DISPLAY2, it works same as on DISPLAY 1.

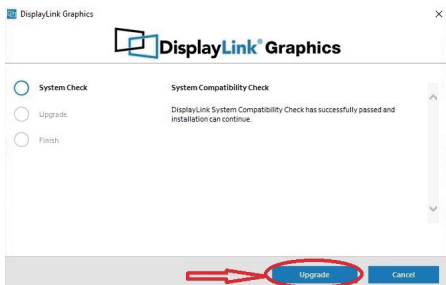


Driver Installation

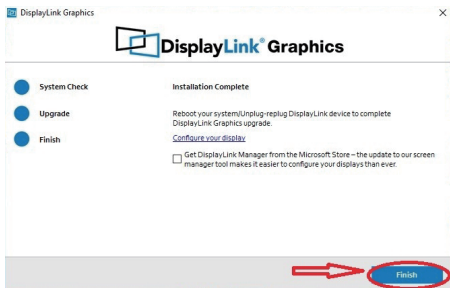
Before using this docking station, please enter the www.wavlink.com/en_us/WL-UG69DK1 or visit www.wavlink.com and click **SUPPORT>Driver>USB DISPLAY>WL-UG69DK1** to find and download the WL-UG69PD1's driver. As for the UG69DK7, please enter the www.wavlink.com/en_us/WL-UG69DK7 or visit www.wavlink.com and click **SUPPORT>Driver>USB DISPLAY>WL-UG69DK7** to find and download the WL-UG69PD7's driver. Then install the driver as the following steps.

For Windows

1. Locate the downloaded folder and double-click the driver file you just downloaded.
2. Navigate to the **DisplayLink Graphics** window, choose **Upgrade**.

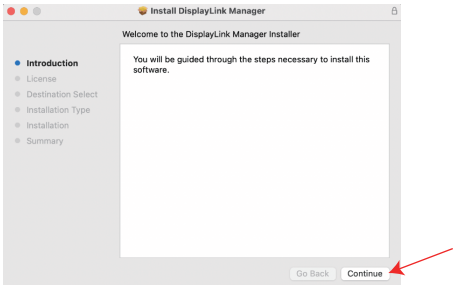


3. Please wait patiently for the complete of the installation. After finishing installation, click **Finish**.

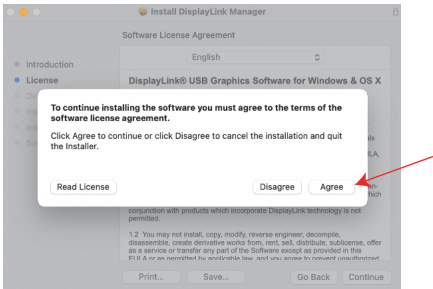
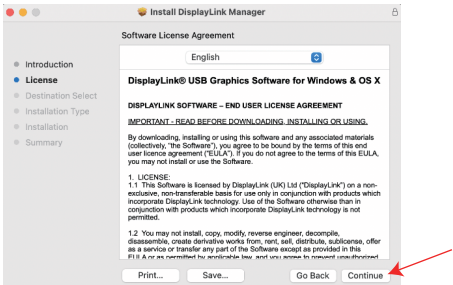


For Mac

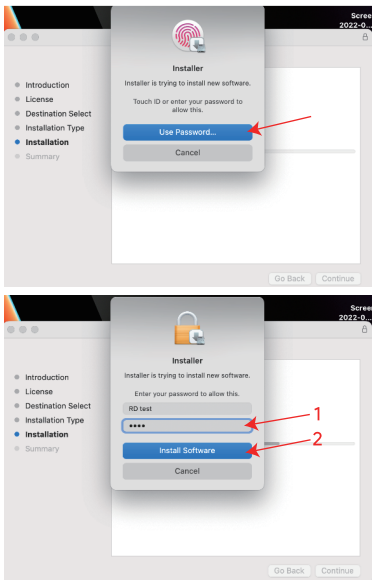
- 1. Double-click the driver file you just downloaded, navigate to the **Install DisplayLink Manager** window, click **Continue**.



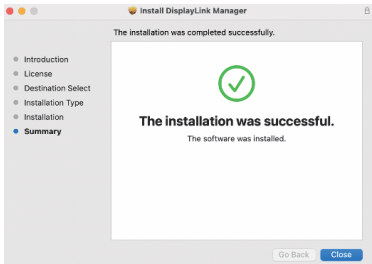
- 2. Click **Continue** to the next window, then click **Agree**.



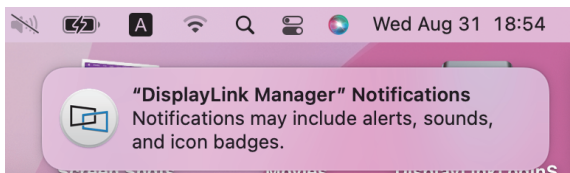
3. Click **Install** and choose **Use Password...**, then enter the screen password and click **Install Software**.



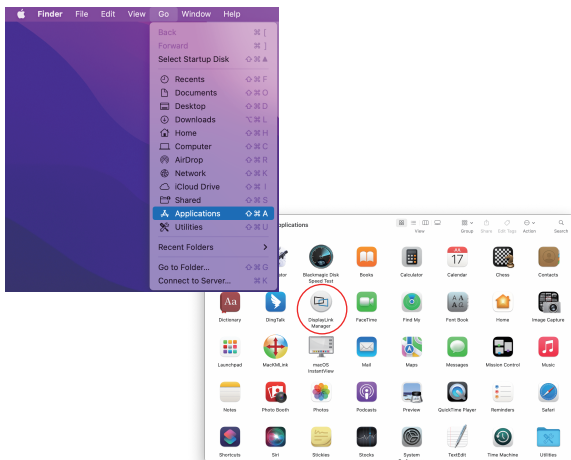
4. Please wait patiently for the installation to complete, then click **Close**.



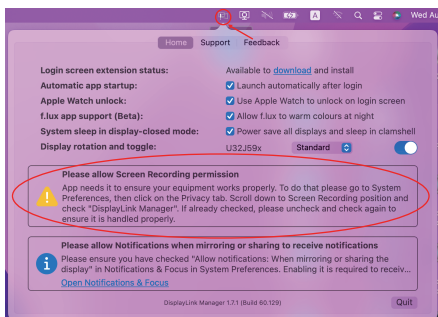
5. If you have enabled notifications from DisplayLink Manager, it will remind you to allow screen recording when it detects that this permission is missing.



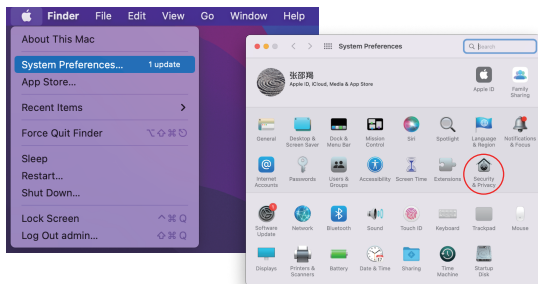
6. If you didn't get the notification from **DisplayLink Manager**, please click **Go** in the function bar at the top left of screen, then select **Applications** and click **DisplayLink Manager**.



7. Click the **DisplayLink Graphics** icon in the function bar at the top right of the screen, and the notification will also appear in the DisplayLink Manager window. A warning is found here, you should allow the screen recording permission for **DisplayLink Manager**.



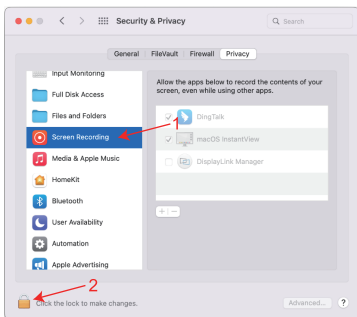
8. Click the **Apple** icon->**System Preferences**, then double click **Security & Privacy**.



9. Enable **Screen Recording** to allow the **DisplayLink Manager** application to capture pixels and send them to your USB peripheral:

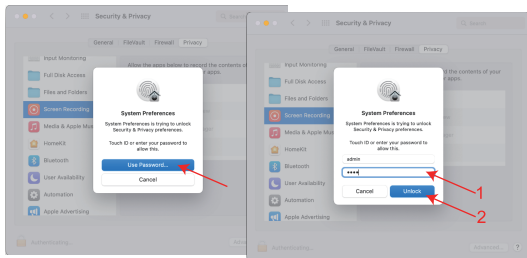
9.1 Select **Screen Recording** in **Privacy** tab.

9.2 Click the  icon at the bottom left of the window to unlock.



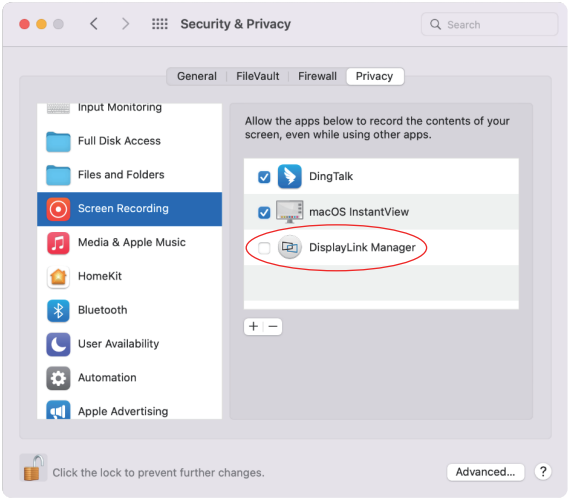
10. When the small window pops up, choose a password or use your fingerprint to unlock.

10.1 If you use password to unlock, and click **Use Password**, then enter your password and choose **Unlock**.

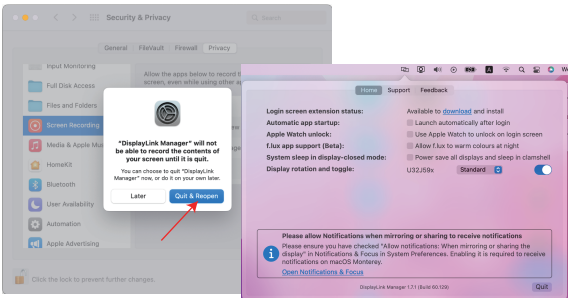


10.2 If you use fingerprint to unlock, it will jump directly to the next step.

11. Check the **DisplayLink Manager** in the right list.



12. Click **Quit & Reopen** to restart the driver, then you can click the **DisplayLink Graphics** icon in the function bar at the top right of the screen to ensure whether the warning has been lifted and whether the driver can work properly.

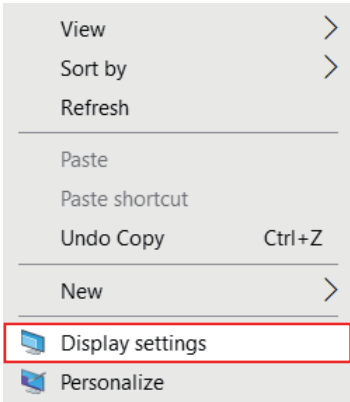


Display Settings

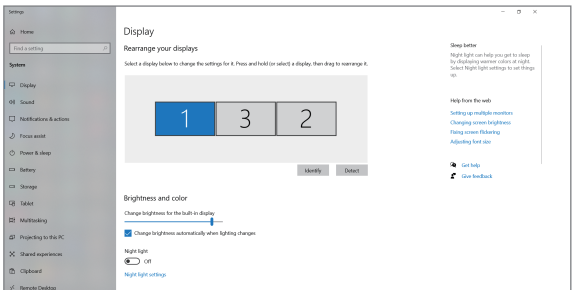
Before configuring the settings, please make sure this docking station has been connected to your laptop and monitors correctly.

For Windows

1. Right-click->**Display settings**.

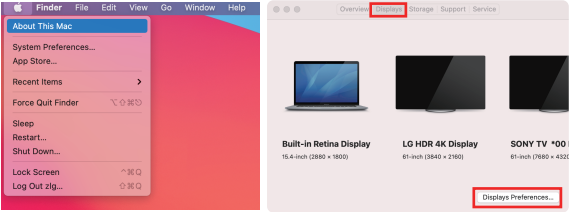


2. In “**Display**”, you can enjoy different operations of duplicating, extending and rotating on your monitors.

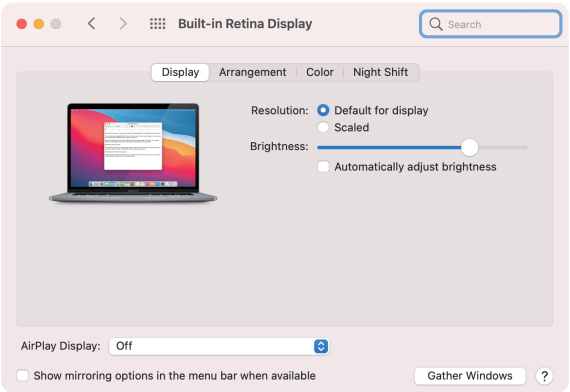


For Mac OS

1. Click Apple icon->**About This Mac**.
2. Click **Displays**->**Displays Preferences**.



3. In **“Display”**, you can enjoy different operations of mirroring, expanding and rotating on your monitors.



4. Or click **“Gather Windows”** to gather all connected displays and make separate settings.

Need help?

We're here for you!



Online support: [wavlink.com](https://www.wavlink.com)

Available Mon-Fri 8:30 am-5:30pm (UTC+8)



support@wavlink.com

Available Mon-Fri 8:30 am-5:30pm (UTC+8)



+1 8889730883

Mon-Fri 9:00 am - 10:00 pm (UTC-5)

www.wavlink.com



**Thank you for purchasing
WAVLINK product!**