



Quick Start Guide

USB-C to M.2 SSD Enclosure



www.wavlink.com/en_us/WL-ST340C
Scan the QR code or load the link for
Quick Start Guide downloading



WAVLINK (@WavlinkOfficial)
WAVLINK SUPPORT (@WavlinkTechSupport)

WL-ST340C

Safety Instructions

Keep this Quick Guide for future reference.
Keep this equipment away from humidity.
If any of the following situation arises, get the equipment checked by a service technician:

- The equipment has been exposed to moisture.
- The equipment has been dropped and damaged.
- The equipment has obvious sign of breakage.
- The equipment has not been working well or you cannot get it work according to Quick Guide.

Copyright Statement

No part of this publication may be reproduced in any form by any means without the prior written permission. Regardless of any direct acknowledgment elsewhere in the body of this document, WAVLINK hereby acknowledges that all trademarks, registered trademarks, service marks, and other protected names and/or symbols contained in this manual and related documents are the property of their respective holders.

Disclaimer

Information in this document is subject to change without notice. The manufacturer does not make any representations or warranties (implied or otherwise) regarding the accuracy and completeness of this document and shall in no event be liable for any loss of profit or any commercial damage, including but not limited to special, incidental, consequential, or other damage.

WEEE Directive & Product Disposal

At the end of its serviceable life, this product should not be treated as household or general waste. It should be handed over to the applicable collection point for the recycling of electrical and electronic equipment, or returned to the supplier for disposal.



System Requirement

- Microsoft Windows 10/11
- Mac OS 11 or later

In the Box

- 1x USB-C to M.2 SSD Enclosure
- 1x USB-C to USB-C Cable with USB-C to USB-A Converter
- 1x Thermally Conductive Silicone Pad
- 1x Screwdriver
- 1x Quick Start Guide

Specification

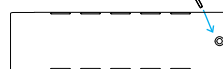
- One built-in M.2 slot, compatible with both PCIe NVMe and SATA protocols.
- The USB-C interface on the Enclosure transfers speed up to 10Gbps, and is backward compatible with USB 3.0/2.0.
- Support 2230/2242/2260/2280 size SSD
- No driver is required.

Overview

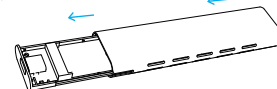


Installation

- 1 Remove the screw of this enclosure.

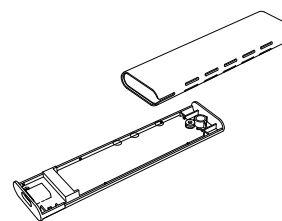


- 2 Slowly push the bare board out.

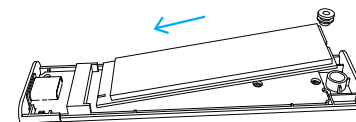


01

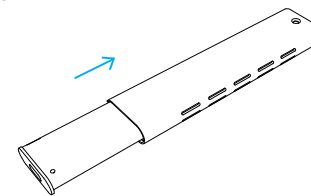
- 3 Take out the bare board and put the cover aside.



- 4 Insert your SSD into the slot of bare board.



- 5 Slide back the board into the enclosure cover and tighten the screw.



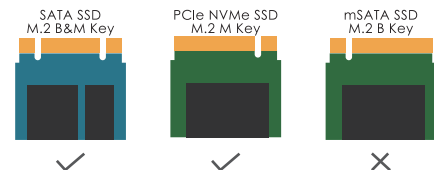
Remark:

Please insert the board back in this order.

02

Choose the Right SSD

To make the enclosure operate smoothly and successfully, you need to select the SSD type that is compatible with the product first. It is compatible with NVME and SATA SSD, please refer to the pictures as follows:

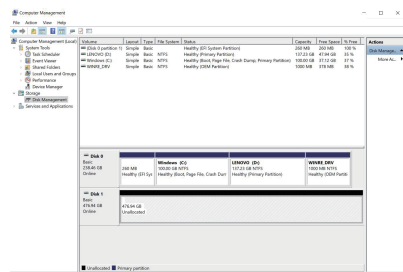


Partition and Format

Note: If the SSD is brand-new and unformatted, please perform partition installation so that the computer can read the data normally; If the SSD is formatted and has stored data, you have no need to perform partition installation because the computer can read the data normally.

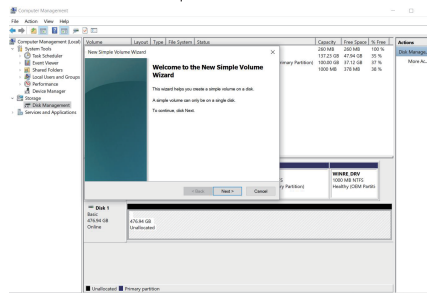
For Windows

1. Right click your PC icon and select "Manage".

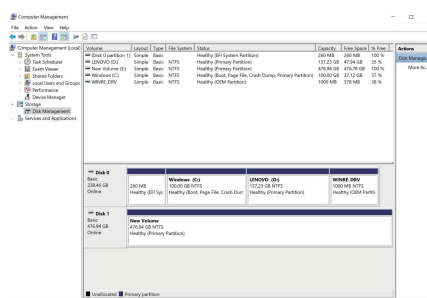


03

2. Choose "Storage" then go to "Disk Management", right click your SSD, choose "New Simple Volume" and select "Next" to proceed.



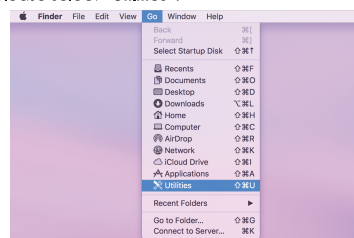
3. Follow the instructions step by step to complete format installation.



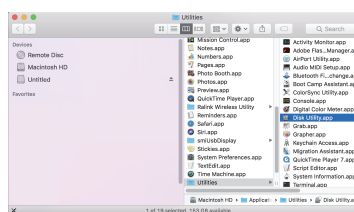
04

For Mac

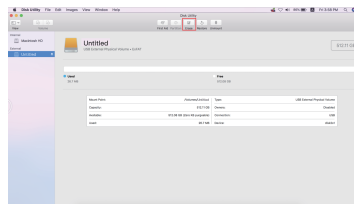
1. From the drop-down list of "Go" in the toolbar, please select "Utilities".



2. Choose "Disk Utility".

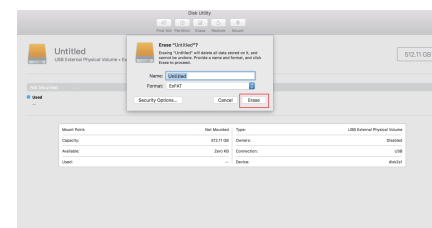


3. A window will pop up, and select "Erase".

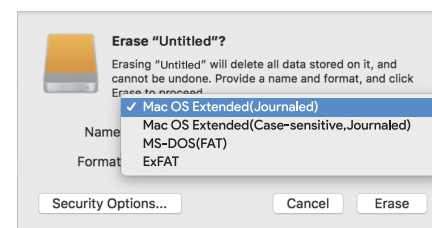


05

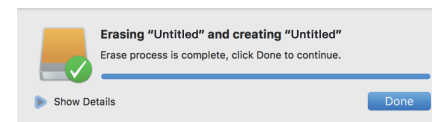
4. Add the SSD Drive name or use the default name.



5. Select the right partition that formats your SSD.



6. Press "Done" to complete the installation.



Official website: www.wavlink.com
Technical support: support@wavlink.com

06