



USB 3.0 Dual Bay Docking Station QUICK START GUIDE



www.wavlink.com/en_us/WL-ST336UA
Scan the QR code or load the link for
Quick Start Guide downloading

WL-ST336UA WAVLINK (@WavlinkOfficial)
WAVLINK SUPPORT (@WavlinkTechSupport)

Safety Instructions

Always read the safety instructions carefully.
Keep this quick start guide for future reference.
Keep this equipment away from humidity.
If any of the following situation arises, get the equipment checked by a service technician:

- The equipment has been exposed to moisture.
- The equipment has been dropped and damaged.
- The equipment has obvious sign of breakage.
- The equipment has not been working well or you cannot get it work according to quick start guide.

Copyright Statement

No part of this publication may be reproduced in any form by any means without the prior written permission.
Other trademarks or brand names mentioned herein are trademarks or registered trademarks of their respective companies.

Disclaimer

Information in this document is subject to change without notice.
The manufacturer does not make any representations or warranties (implied or otherwise) regarding the accuracy and completeness of this document and shall in no event be liable for any loss of profit or any commercial damage, including but not limited to special, incidental, consequential, or other damage.

WEEE Directive & Product Disposal

At the end of its serviceable life, this product should not be treated as household or general waste. It should be handed over to the applicable collection point for the recycling of electrical and electronic equipment, or returned to the supplier for disposal.

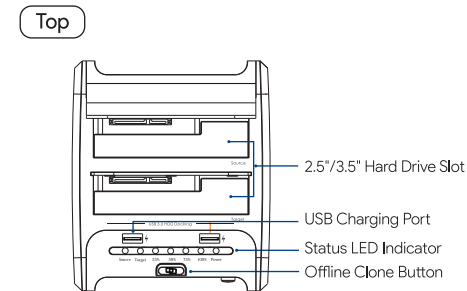
System Requirements

- Microsoft Windows
- Mac OS X

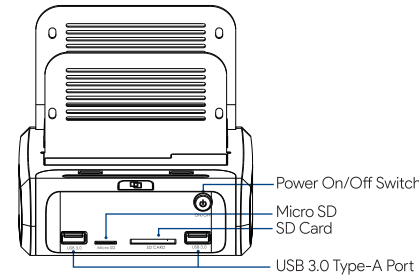
In the Box

- 1 x USB 3.0 Dual Bay Docking Station
- 1 x DC 12V Power Adapter
- 1 x USB-B to USB-A Cable
- 1 x USB-A to USB-C Adapter
- 1 x Quick Start Guide

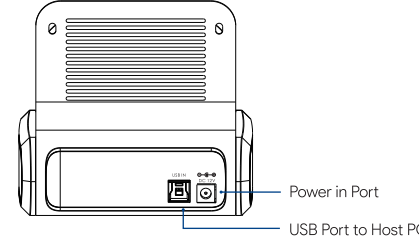
Overview



Front

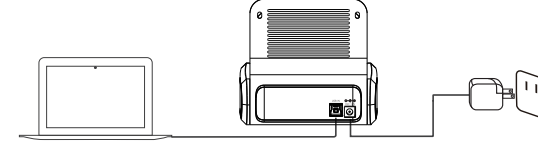


Rear

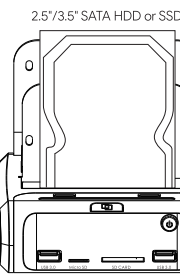


Installation

1. Plug the COMMUNICATOR into an outlet using the DC power adapter.
2. Connect the COMMUNICATOR to a computer using the USB Cable.
3. Press the power switch to power on the COMMUNICATOR.



4. Insert 2.5"/3.5" SATA SSD or HDD into the slot(s).
5. Connect compatible peripherals to the COMMUNICATOR.



Removal

Instruction for the removal of drivers

WARNING:

- a. Before the removal, please stop all data access and transfer to the device.
- b. Never remove your hard drive(s) or insert a new one (for ST336UA) while the hard drive is in use. Doing like so may corrupt the data on the hard drive(s) or damage the hard drive(s), docking station, or computer.

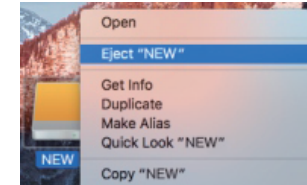
Windows

1. Right-click the lower-right corner symbol in the task bar.
2. Click your hard drive(s) from the list.
3. Detach the hard drive(s) after the "Safe To Remove Hardware" shows up.



Mac OS X

1. Right-click the symbol of your hard drive.
2. Eject your hard drive from the list.



Offline Clone

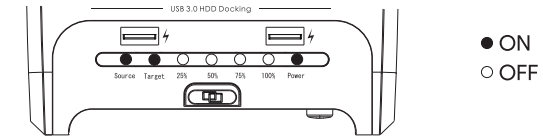
WARNING: All data in Target Hard Drive will be erased once Offline Clone starts, please back up all your data.

Note:

1. The capacity of Target Hard Drive must be larger than or equal to the capacity of Source Hard Drive.
2. Offline clone can work only after both LED indicators of Target and Source Hard Drive are solid on, otherwise the Cloning process cannot be initiated.
3. Once the docking station is connected via USB interface, the Offline Clone will be invalid.

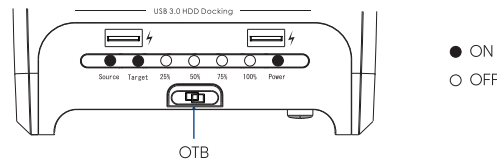
Offline Clone Quick Guide

1. Do not connect your docking station to your computer.
2. Insert the drives into the slots and power on the docking station.
3. When both the LED indicators of Source and Target Hard Drive illuminate, the Cloning process is ready.



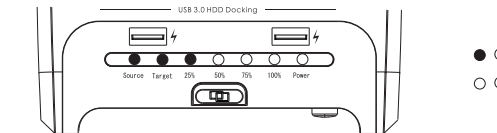
● ON
○ OFF

4. Press the OTB button until both the LED indicators of Source and Target Hard Drive flash. Then press the OTB button again while LED indicators are still flashing.



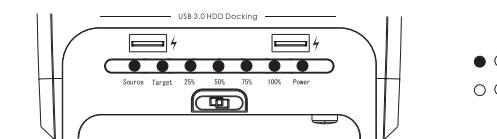
● ON
○ OFF

5. If done correctly, the 25% LED should flash, indicating the cloning process starts and the 50%, 75% and 100% LED indicator lights will flash in sequence to show the progression of the cloning process.



● ON
○ OFF

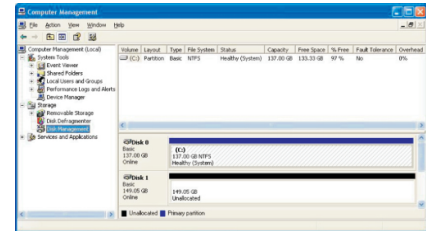
6. When all the LED indicators are solid on, the cloning process is completed.



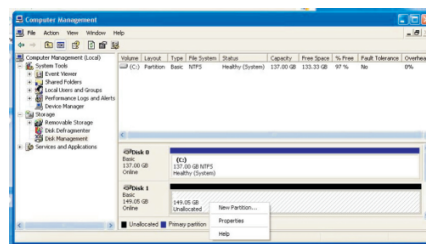
● ON
○ OFF

Preparing the Hard Drives for Use

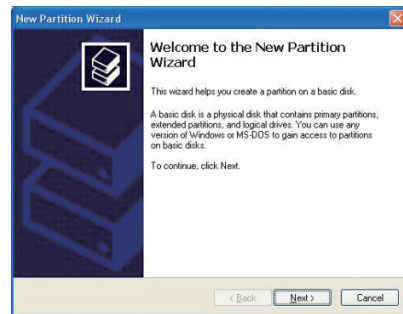
- 1). Right-click on the My Computer icon and select Manage. In the left panel of the Computer Management window, click Disk Management.



- 2). In the bottom right panel of the Computer Management window, you should see your drives listed as unallocated. Click on the unallocated drive and select New Partition. The New Partition Wizard will launch.



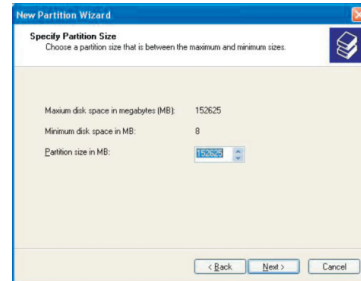
- 3). When the New Partition Wizard appears, click Next to continue.



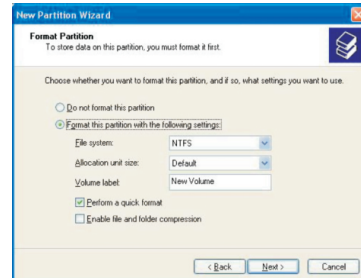
- 4). Select the partition type you wish to create by clicking on Primary or Extended as appropriate. When you have made your selection, click Next to continue.



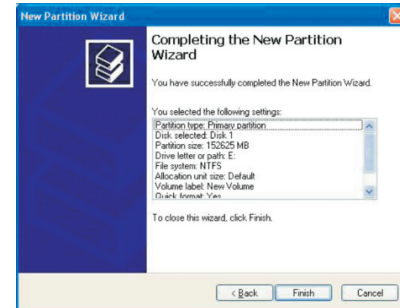
- 5). Specify the size of the partition you wish to create. You must select a partition size that is between the maximum and minimum sizes (typically the maximum disk space available). Once you have done so, click Next to continue.



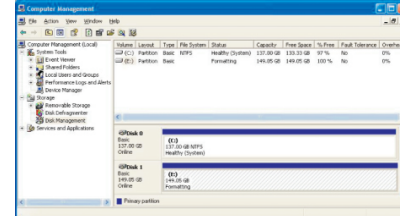
- 6). Select Format this partition with the following settings. Using the drop down buttons, select the file system, allocation unit size, and volume label you wish to use. Select Perform a Quick Format and click Next to continue.



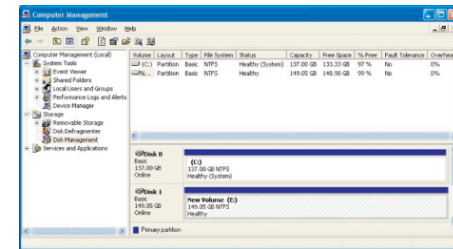
- 7). A notification window will appear indicating that you have successfully completed the New Partition Wizard. Click Finish to commence the formatting of the drive.



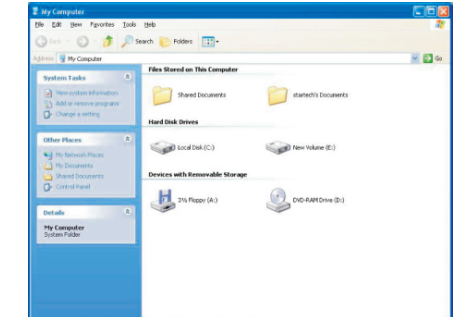
- 8). The status of the drive, as shown in the Computer Management window, will be updated to reflect the selections you have made. Please wait while the drive is being formatted.



- 9). Once the drive has been successfully partitioned and formatted, it will display as Healthy.



- 10). To access your newly partitioned drive(s), open My Computer. Your drive(s) should be displayed below the heading Hard Disk Drives.



FAQ

Q1. Why can't I start the offline clone?

- a. Please check if Target Hard Drive's capacity is larger or equivalent to Source Hard Drive. Here the capacity means the actual capacity that can be used, instead of the one marked on the product. For example, the actual capacity of a disk marked 500GB might be 480GB only.
- b. Hard drive with bad sectors might not be directly cloned. It is advised to repair the bad sectors first or simply replace it with a new hard drive.

Q2. Why is the hard disk disconnecting from the computer during data transfer?

- a. Ensure the docking station is connected to a power source to keep a stable power supply.
- b. Try not to move the docking station during data transfer as it can loosen the cables in the ports and interrupt transfer.

Q3. Can I recover my data in Target Hard Drive?

- a. All data in Target Hard Drive will be deleted once offline clone starts. Before you attempt to clone your hard drive, we highly recommend backing up all your data first.

Q4. How come my hard drives are not showing up?

- a. Disconnect the docking station from your computer. Wait a few moments and then reconnect the device; Connect the docking station to another USB port. If the problem still exists, the hard drive might need to be reformatted.

Official website: www.wavlink.com
Technical support: support@wavlink.com