

Introduction

The USB-C 2.5 Gigabit Ethernet adapter converts a USB-C port into a 10/100/1000/2500 Base-T Ethernet port. It can replace a damaged computer network card or connect a USB-C PC to a high speed Ethernet Network at places where a wireless connection is slow, inconsistent or not available at all. It is faster than gigabit and future-proof, hence is ideal for video conferencing, pro gaming, large files transferring and video streaming.

Thank you for choosing this USB-C to 2.5 Gigabit Ethernet Adapter !

Features

- Fully compliant with the IEEE 802.3u (10/100Mbps), the IEEE 802.3ab (1000Mbps) and the IEEE 802.3bz (2500Mbps).
- USB-C 5Gbps compliant with USB Spec 3.0, 2.0 and 1.1.
- Designed for USB-C compatible devices, reversible plug orientation and no external power needed.
- Green and Amber LEDs indicate the status of power, network connection and speed.
- Supports Win 7/8/10, Mac OSX 10.6 and later.
- Portable and tiny in size: fits anywhere in your office bag or pocket.
- Supports Microsoft Wake Packet Detection (WPD).
- Supports 'Wake-On-Lan' and 'RealWoW!' to enable remote wake-up of a sleeping PC through Internet.

In the Box

Please check items in the box before installation.

1 x USB-C to 2.5 Gigabit Adapter

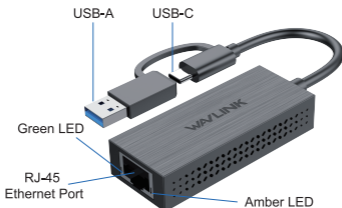
1 x CD-shaped Paper Card for Driver Download

1 x Quick Start Guide

System Requirements

- Mac OS 10.6 and later
- Win 7/8/10

LED Descriptions



Blinking green: auto recognition and transferring at 2.5 Gigabit speeds.
Blinking amber: auto recognition and transferring at 10/100/1000M speeds.

Off: The adapter is not receiving electrical power and no Ethernet connection is detected.

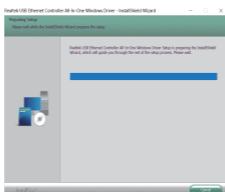
Driver Installation

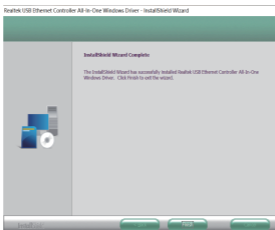
Driver software installation is required. Please download the driver from our official website (<https://www.wavlink.com>). The URL is also available on the CD-shaped paper in the box.

Step 1: Click one of the buttons of corresponding systems to download the driver.

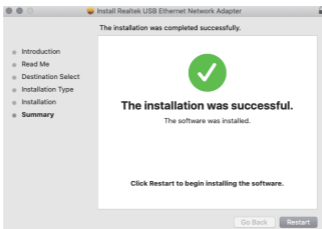
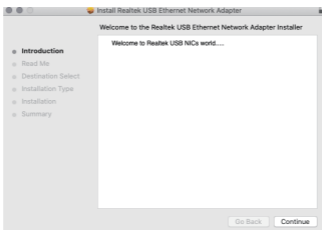
Step 2: Find the Zip.

Step 3: Click to launch the executive file "**setup.exe**" (Windows) or "**RTUNICv1.0.20.pkg**" (Mac), then do as per the on-screen instructions.





For Microsoft Windows



For Mac OS

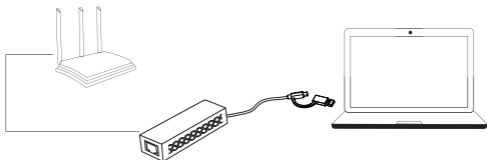
Step 4: Restart your computer.

Note: You may need to uninstall the existing Realtek Ethernet driver to install a new one successfully on Windows OS .

Plug and Play

Step 1: Plug in the adapter, then connect an Ethernet cable between your router or modem and the Ethernet port on the adapter.

Step 2: Just starting using it when one LED is blinking.



Note: Open a browser and test the connection.

Network Configuration

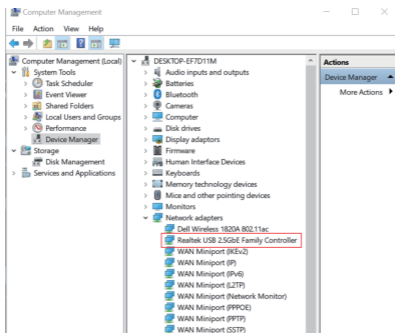
Please ensure you have connected your network device, e.g. Switch/Router/ADSL/Cable modem to the adapter's LAN port via an Ethernet cable and that the adapter plugs into a USB port.

Notes on Ethernet Cables

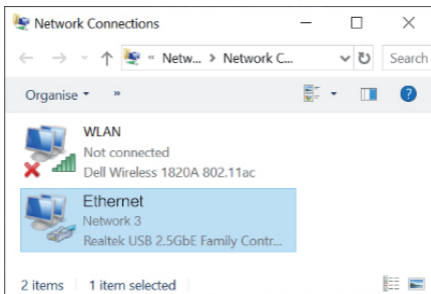
- Sometimes a so-called crossover Ethernet cable is required for connection to certain network equipments. As the adapter's LAN port supports Auto-MDIX feature, it eliminates the need to use crossover cables.
- In order to achieve the full 2.5Gbps speeds for this adapter, you will need a Cat 5e or higher rated Ethernet cord that does not exceed 100m in length.

On Windows

1. Right-click the **computer** icon > click **management** > click **device manager**. You can see the driver has been installed.

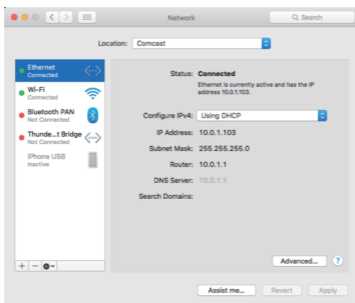


2. Right-click the **Network** icon in the system tray and select **Network and Sharing Center**. Click **Change adapter settings** and find the new Ethernet to check and set.



On Mac OS

1. Go to Apple Menu > **System Preferences** > **Network**. You could now see "**Connected**" and "**USB 10/100/1G/2.5G is currently active...**", your new Ethernet adapter should now be available.



Drivers Update Link:

<http://www.realtek.com.tw/downloads/downloadsView.aspx?Langid=1&PNid=13&PFid=56&Level=5&Conn=4&DownTypeID=3&GetDown=false>

WEEE Directive & Product Disposal



At the end of its serviceable life, this product should not be treated as household or general waste. It should be handed over to the applicable collection point for the recycling of electrical and electronic equipment, or returned to the supplier for disposal.

Copyright Statement

Wavlink and the Wavlink logo are registered trademarks of SINBORY Technology, Ltd.

Windows is registered trademarks of Microsoft Corporation.

Mac OS is registered trademarks of Apple Inc. All other names used in this publication are for identification only and may be trademarks of their respective owners.

Wavlink reserves the right to revise this document and to make changes to the content herein without obligation to notify any person or organization of such revisions or changes.

Need help?

We're here for you!



Online support: wavlink.com

Available Mon-Fri 8:30 am-5:30pm (UTC+8)



support@wavlink.com

Available Mon-Fri 8:30 am-5:30pm (UTC+8)



+1 8889730883 (US Local)

Mon-Fri 9:00 am - 10:00 pm (UTC-5)

www.wavlink.com



**Thank you for purchasing
WAVLINK product!**