

Introduction

The 2.5 Gigabit Ethernet adapter converts a USB port into a 10/100/1000/2500 Base-T Ethernet port. It can replace a damaged computer network card or connect a USB PC to a high speed Ethernet Network at places where a wireless connection is slow, inconsistent or not available at all. It is faster than gigabit and future-proof, hence is ideal for video conferencing, pro gaming, large files transferring and video streaming. Thank you for choosing this 2.5 Gigabit Ethernet Adapter !

Features

- Fully compliant with the IEEE 802.3u(10/100Mbps), the IEEE 802.3ab(1000Mbps) and the IEEE 802.3bz(2500Mbps)
- One USB-C and USB-A compliant with USB Spec 3.0, 2.0 and 1.1.
- Designed for USB-C compatible devices, reversible plug orientation and no external power needed.
- Green and Amber LEDs indicate the status of power network connection and speed.
- Supports Win 7/8/10, Mac OSX 10.6 and later Portable and tiny in size: fits anywhere in your office bag or pocket.
- Supports Microsoft Wake Packet Detection (WPD).
- Supports 'Wake-On-Lan' and 'RealWoW!' to enable remote wake-up of a sleeping PC through internet.

In the Box

Please check items in the box before installation.

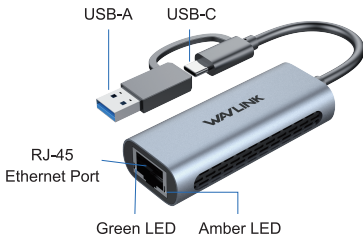
1 x 2.5 Gigabit Ethernet Adapter

1 x Quick Start Guide

System Requirements

- Mac OS 10.6 and later
- Win 7/8/10

LED Descriptions



Blinking green: auto recognition and transferring at 2.5 Gigabit speeds.

Blinking amber: auto recognition and transferring at 10/100/1000M speeds.

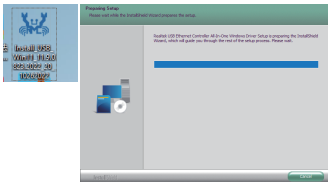
Off: The adapter is not receiving electrical power and no Ethernet connection is detected.

Driver installation

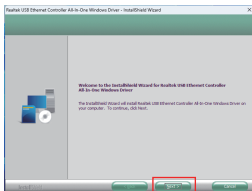
For Windows 10/11/Later and MAC OS, it is Plug and Play, so no Driver installation is needed. If the Network port of this Dock can't be recognized, please visit to download [www.wavlink.com/SUPPORT/Driver/PC Peripherals/USB Network Card/WL-NWU330GCA](http://www.wavlink.com/SUPPORT/Driver/PC%20Peripherals/USB%20Network%20Card/WL-NWU330GCA) or [www.wavlink.com/en us/WL-NWU330GCA](http://www.wavlink.com/en-us/WL-NWU330GCA) to download and manually install the Driver.

For Windows

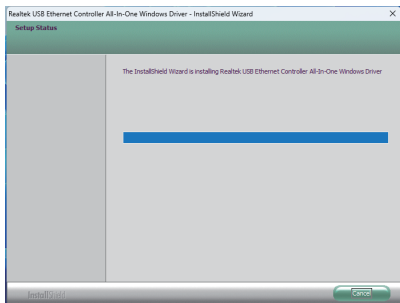
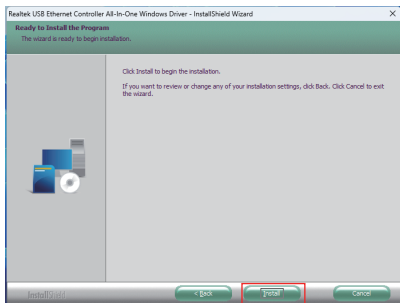
1. Locate the downloaded folder and unzip the file to the desktop, please select **Yes** if your computer asks your permission, then double-click the Driver icon on the desktop.



2. Click **Next** to continue the installation process.



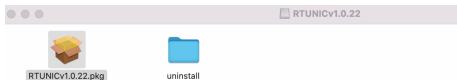
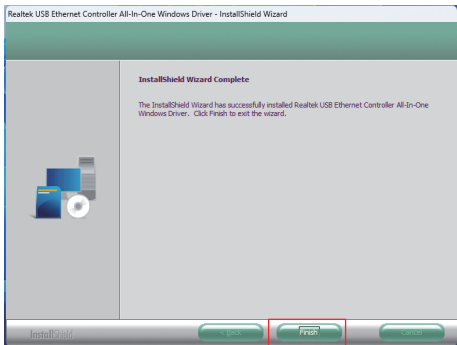
3. Select **Install** to begin the installation. If you want to review or change any of your installation settings, click **Back** or **Cancel** to exit the wizard.



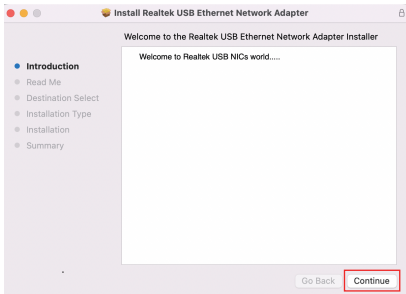
4. After the Driver is successfully installed, select **Finish** to exit the wizard.

For Mac OS

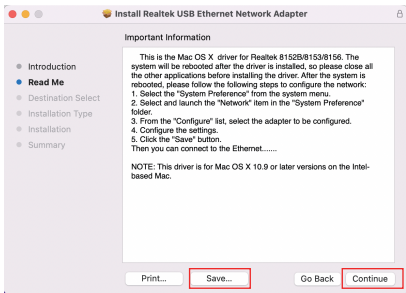
1. Locate the downloaded folder and double click the icon on the desktop.
2. Double-click the icon to open the file.



3. Navigate to the wizard window, and click **Continue** to the next step.



4. Read the Important Information carefully and click Save, then click **Continue**.



5. Click **Install** to perform a standard installation of this Network Adapter.



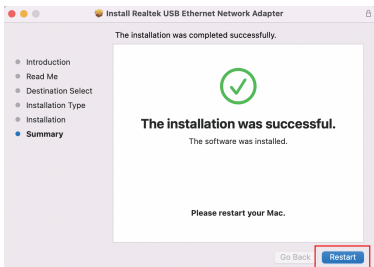
6. Select **Use Password** or use Touch ID to allow the software installation.



7. Select **Install Software** after entering the screen password.



8. Please wait patiently for the installation to complete, then click **Restart**.



9. Please restart your Mac.

Need help?

We're here for you!



Online support: wavlink.com

Available Mon-Fri 8:30 am-5:30pm (UTC+8)



support@wavlink.com

Available Mon-Fri 8:30 am-5:30pm (UTC+8)



+1 8889730883

Mon-Fri 9:00 am - 10:00 pm (UTC-5)

www.wavlink.com



**Thank you for purchasing
WAVLINK product!**