



see the world

## QUICK START GUIDE

### 10 Gigabit PCIe 3.0 Network Adapter



[www.wavlink.com/en\\_us/WL-NWP004](http://www.wavlink.com/en_us/WL-NWP004)

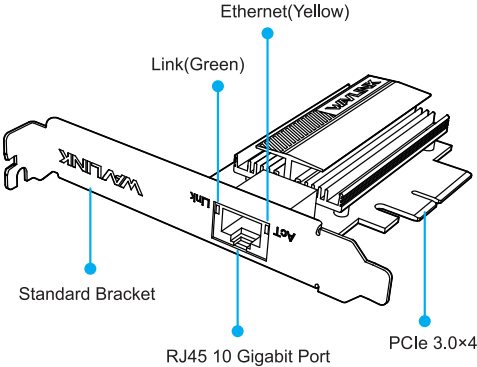
Scan the QR code or load the link for  
Quick Start Guide and Driver downloading



WAVLINK (@WavlinkOfficial)  
WAVLINK SUPPORT (@WavlinkTechSupport)

**WL-NWP004**

# Overview

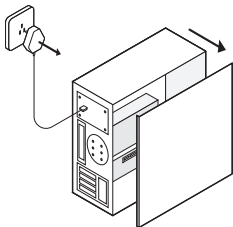


## LED Indication

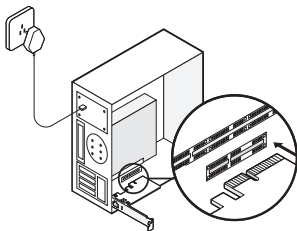
LED	Color&Status	Network
LINK	Yellow, Solid	The connection is active at speeds of 5G/2.5G/1G/100Mbps/10Mbps.
	Green, Solid	The connection is active at 10Gbps speed.
ACT	Green, Flashing	Data is being actively transferred over the network.

## Hardware Connection

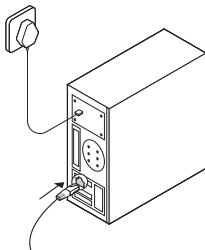
1. Please shut down your computer, disconnect the power supply, and remove the case cover.



2. Identify an available PCIe slot on your motherboard and securely insert the network card adapter.



3. After the adapter is in place, replace the case cover, reconnect the power supply, and power on your computer.

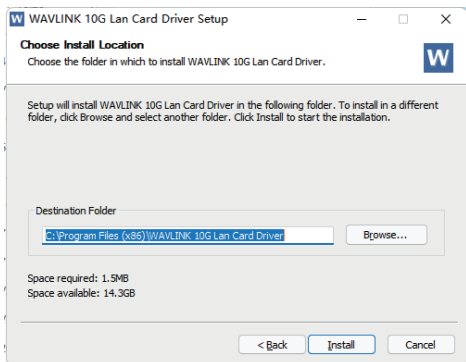


# Driver Installation

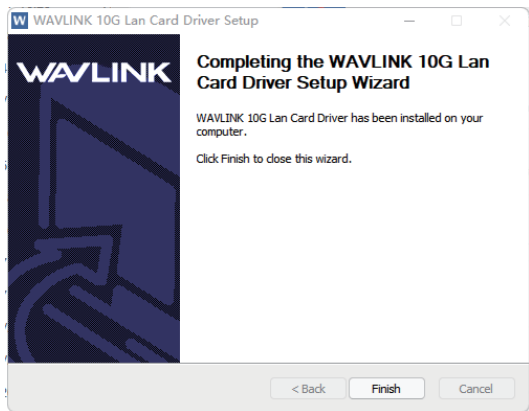
1. Download WAVLINK 10G Lan Card Driver from [www.wavlink.com>SUPPORT>Driver](http://www.wavlink.com>SUPPORT>Driver) or [www.wavlink.com/en-us/WL-NWP004](http://www.wavlink.com/en-us/WL-NWP004).
2. Extract **WAVLINK 10G Lan Card Driver Installation.exe** from the file, and double click it to start up the installation.
3. Click **"Next"**.



4. Click **"Browse"** to choose install file location, and click **"Install"**.



5. Click **"Finish"** to complete the installation.



## Connecting to Network

Now you can connect your network device, switch, router, DSL/Cable modem, e.g., to the adapter's LAN port via an Ethernet cable.

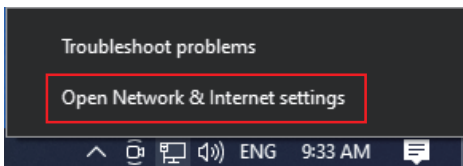
### Notes on Ethernet Cables

- Sometimes a so-call crossover Ethernet cable is required for connection to certain network equipments. As the adapter's LAN port supports Auto-MDIX feature, it eliminates the need to use crossover cables.
- When the Ethernet adapter is used in the 10G network, it's recommended that you use Category 7 Ethernet cable for higher transmission speed.

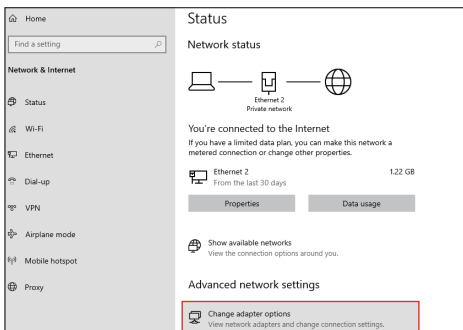
The adapter's AutoSense feature can automatically detect the network's maximum line speed. To have a 1000/2500/5000/10000Mbps connection, your network device (e.g., switch, router or DSL modem) must also support 1000/2500/5000/10000Mbps.

**On Windows 10, you can view the connection speed by the steps below:**

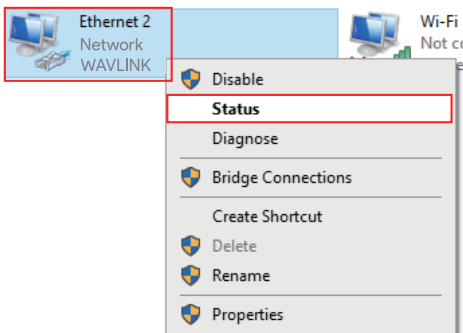
1. Right-click the network icon in the system tray and select **Open Network & Internet settings**



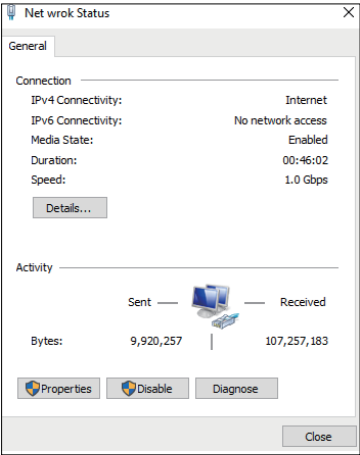
2. Click Change adapter options.



3. Right-click the **Ethernet** icon indicating your network adapter and click **Status**.



4. Current connection speed will be displayed among the connection information.

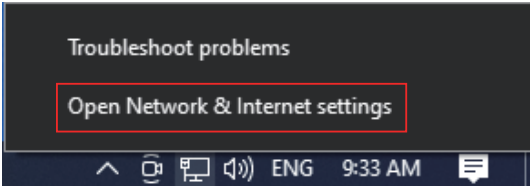


## Configuring Network Settings

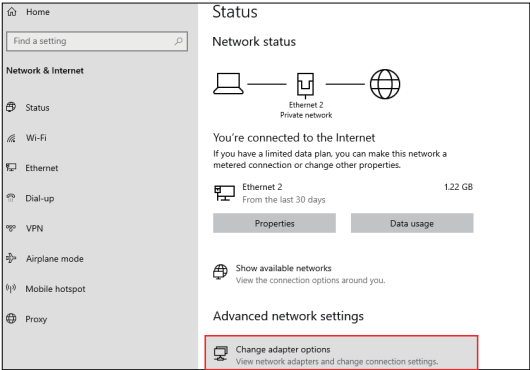
You should configure your Ethernet adapter as required according to your network environment. If you are unsure about the settings, consult with your network administrator for assistance. The following describes how to launch the network settings window for your Ethernet adapter.

To configure network settings for your Ethernet adapter on Windows:

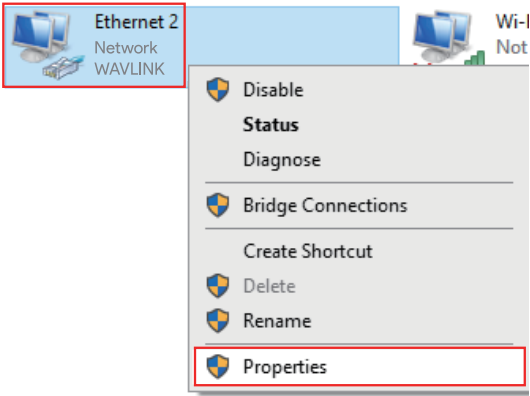
1. Right-click the network icon in the system tray and select **Open Network & Internet settings**.



2. Click **Change adapter options**.

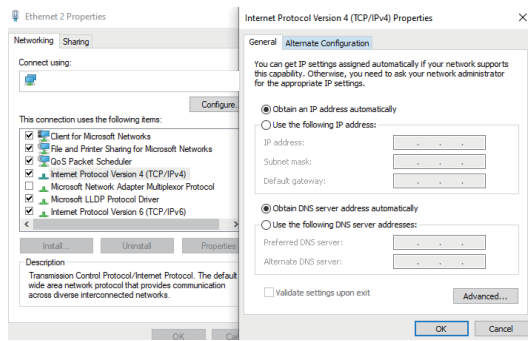


3. Right-click the Ethernet icon indicating your network adapter and click **Properties**.





4. Then the Ethernet Properties window appears for user to make required settings.



Note: Open a browser and test the connection.

# Troubleshooting

## Q1.What should I do if my computer cannot find the Adapter?

- Restart your computer and try again.
- Power off the computer PCIe slot.
- If the problem still persists, contact our Technical Support.

## Q2.What should I do after installing the 10G Driver manually?

Go to **Device Manager-Network adapters** to select 10G network card, then right-click to select **Properties-Advanced-Connection Speed and Duplex Mode (Speed&Duplex)-Value**, and choose **10G Full Duplex**. After that, please ensure that other hardware supports the 10G bandwidth. \*For more details, please contact online customer service to request the driver.

# Need help?

We're here for you!



**Online support: [wavlink.com](http://wavlink.com)**

Available Mon-Fri 8:30 am-5:30pm (UTC+8)



**[support@wavlink.com](mailto:support@wavlink.com)**

Available Mon-Fri 8:30 am-5:30pm (UTC+8)



**+1 8889730883 (US Local)**

Mon-Fri 9:00 am - 10:00 pm (UTC-5)

**[www.wavlink.com](http://www.wavlink.com)**



**Thank you for purchasing  
WAVLINK product!**